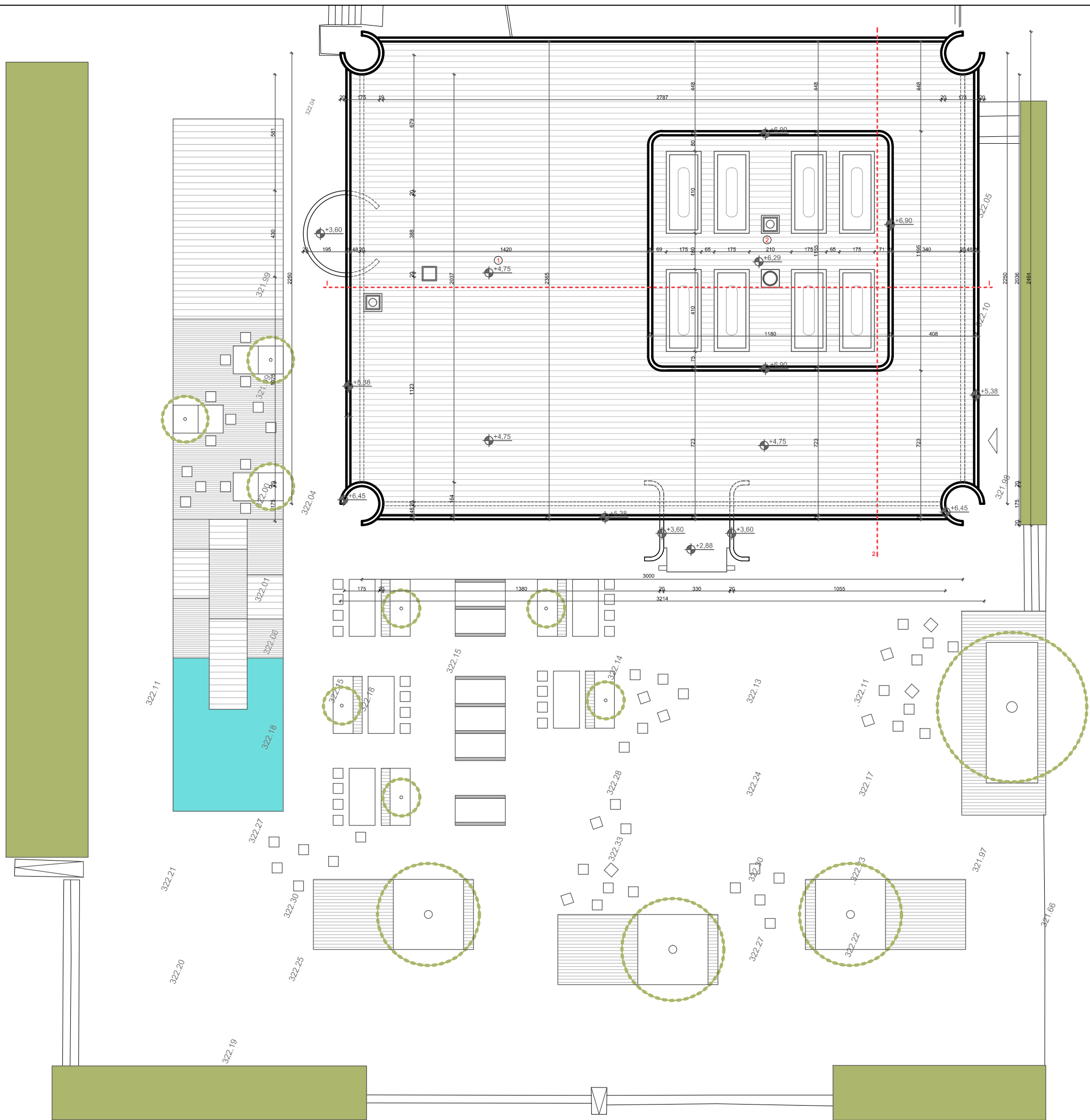

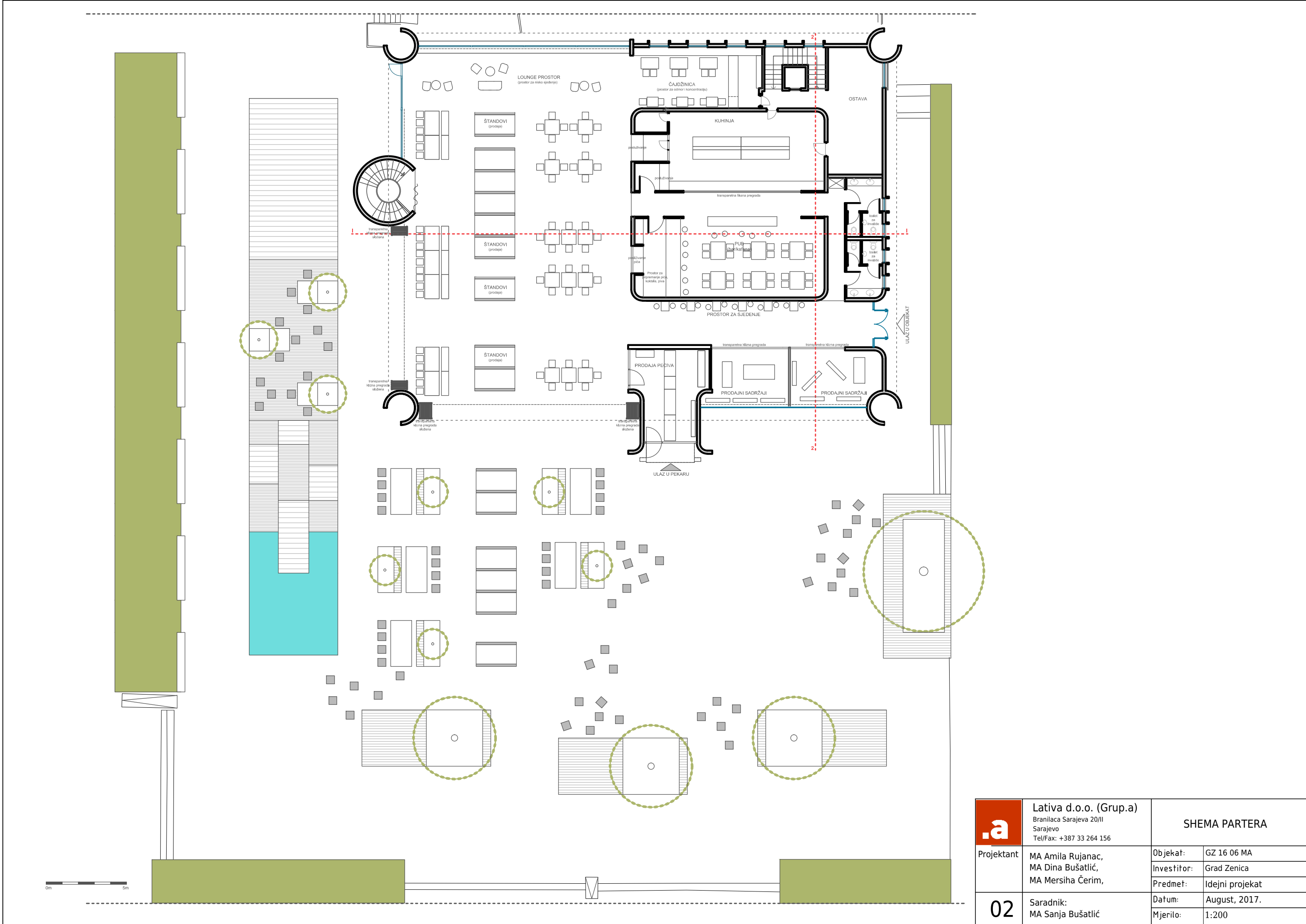


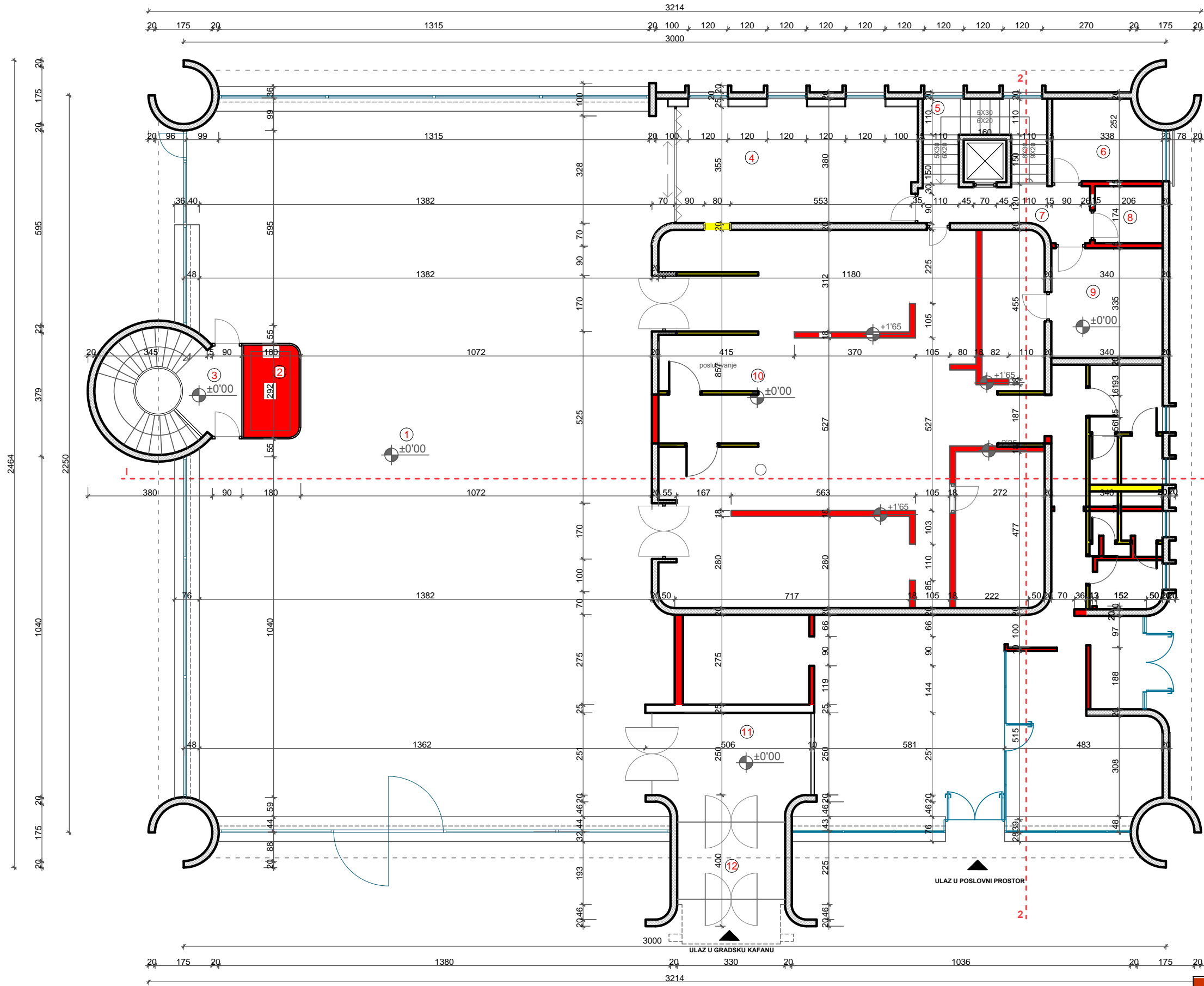
IDEJNI PROJEKAT ZA OBJEKAT  
GRADSKE KAFANE U ZENICI



	<b>Lativa d.o.o. (Grup.a)</b> Branilaca Sarajeva 20/II Sarajevo Tel/Fax: +387 33 264 156	<b>SITUACIJA</b>	
	<b>Projektant</b> MA Amila Rujanac, MA Dina Bušatlić, MA Mersiha Čerim,	<b>Objekat:</b> GZ 16 06 MA <b>Investitor:</b> Grad Zenica <b>Predmet:</b> Idejni projekat	
<b>01</b>	<b>Saradnik:</b> MA Sanja Bušatlić	<b>Datum:</b> August, 2017. <b>Mjerilo:</b> 1:200	

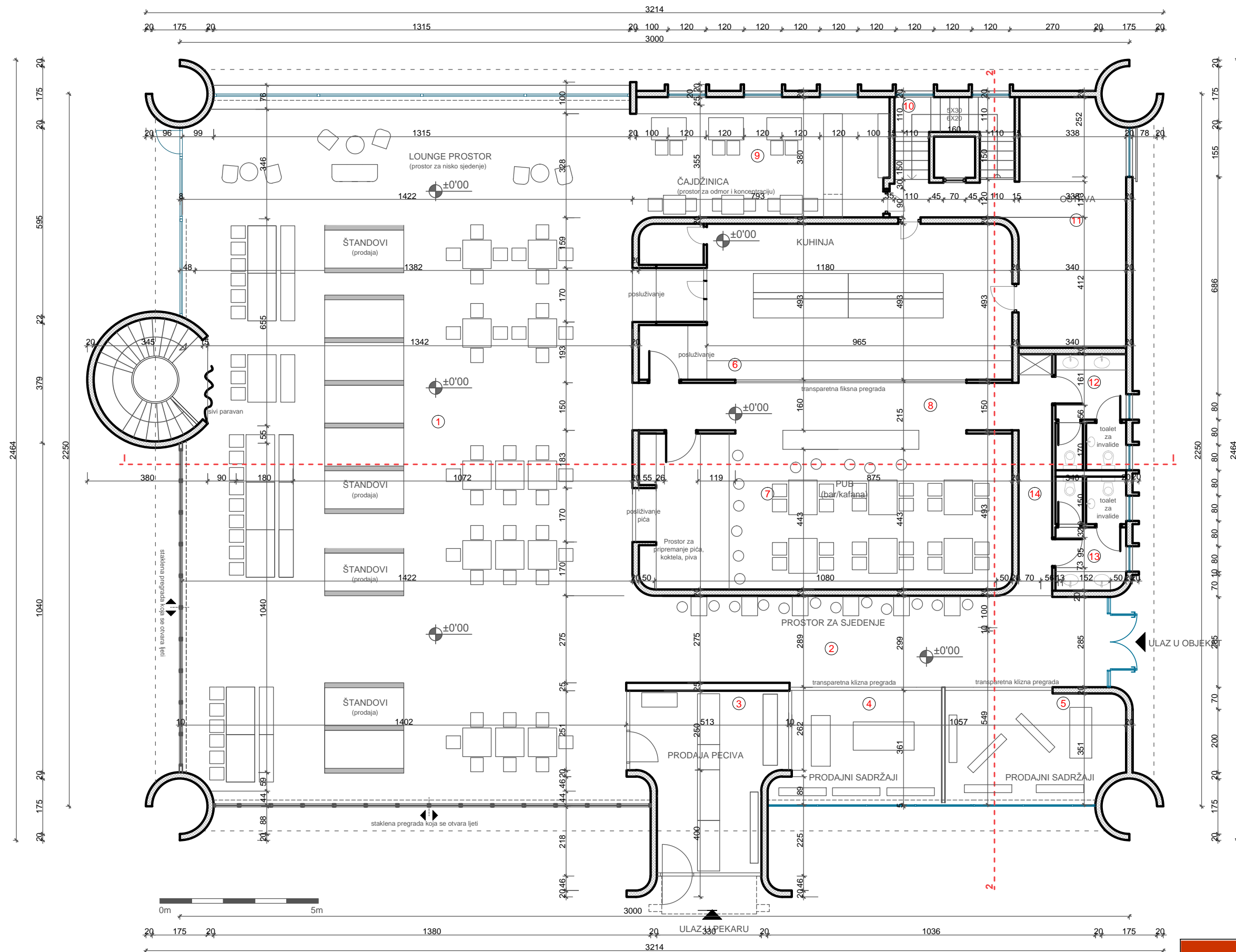


	<b>Lativa d.o.o. (Grup.a)</b> Branilaca Sarajeva 20/II Sarajevo Tel/Fax: +387 33 264 156	<b>SHEMA PARTERA</b>	
	Projektant MA Amila Rujanac, MA Dina Bušatlić, MA Mersiha Čerim,	Objekt: GZ 16 06 MA	Investitor: Grad Zenica
<b>02</b>	Saradnik: MA Sanja Bušatlić	Datum: August, 2017.	Mjerilo: 1:200



■ DIJELOVI KOJI SE UKLANJAJU  
■ DIJELOVI KOJI SE DODAJU

<b>.a</b>	Lativa d.o.o. (Grup.a) Branilaca Sarajeva 20/II Sarajevo Tel/Fax: +387 33 264 156		<b>HEMA RUŠENJA</b>	
	Projektant	MA Amila Rujanac, MA Dina Bušatlić, MA Mersiha Čerim,	Objekat:	GZ 16 06 MA
<b>03</b>	Saradnik:	MA Sanja Bušatlić	Investitor:	Grad Zenica
			Predmet:	Idejni projekat
			Datum:	August, 2017.
			Mjerilo:	1:125

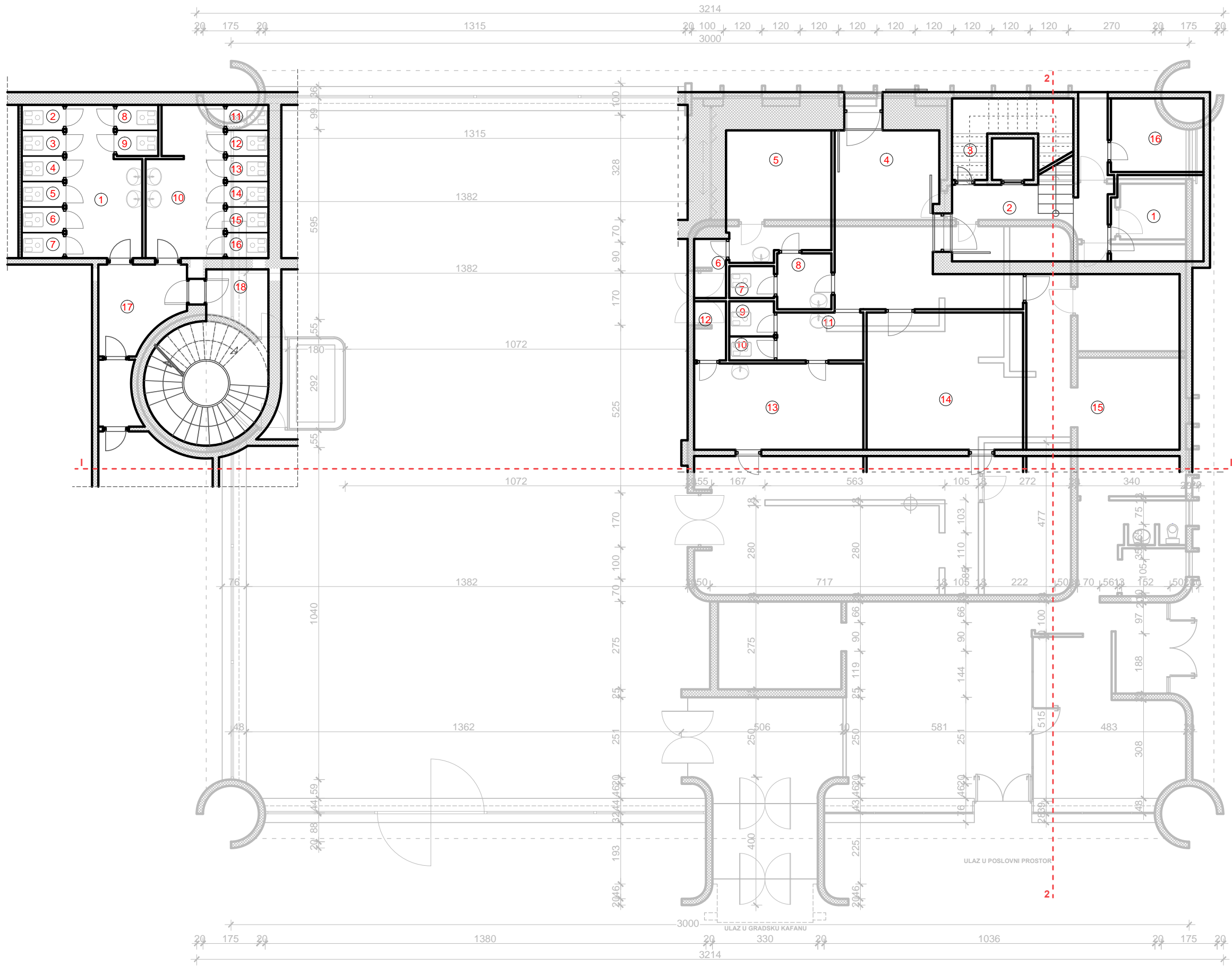


**OSNOVA PRIZEMLJA**

- [1] Glavna sala; P= 307 m<sup>2</sup>; O= 74 m; Pod: Kamene ploče; Svijetla visina: 360 cm
- [2] Prostor za kratko zadržavanje; P= 41,00 m<sup>2</sup>; O= 35,60 m; Pod: Keramičke pločice; Svijetla visina: 385 cm
- [3] Prodaja finih peciva; P= 21,20 m<sup>2</sup>; O= 45,90 m; Pod: Beton
- [4] Prodaja; P= 17,80 m<sup>2</sup>; O= 17,99 m; Pod: Keramičke pločice; Svijetla visina: 280 cm
- [5] Prodaja; P= 19,70 m<sup>2</sup>; O= 18,07 m; Pod: Keramičke pločice; Svijetla visina: 280 cm
- [6] Kuhinja; P= 57,96 m<sup>2</sup>; O= 32,98 m; Pod: Keramičke pločice; 500 cm (do stropa), 650 cm (do lanterne)
- [7] Pub; P= 57,96 m<sup>2</sup>; O= 32,98 m; Pod: Keramičke pločice; 500 cm (do stropa), 650 cm (do lanterne)
- [8] Komunikacije; P= 18,30 m<sup>2</sup>; O= 29,10 m; Pod: Keramičke pločice; Svijetla visina: 300 cm
- [9] Čajdžinica; P= 30,22 m<sup>2</sup>; O= 24,12 m; Pod: Kamene ploče; Svijetla visina: 360 cm
- [10] Stepenište i lift; P= 9,90 m<sup>2</sup>; O= 12,80 m; Pod: Beton
- [11] Ostava/Administracija; P= 26,19 m<sup>2</sup>; O= 22,14 m; Pod: Keramičke pločice; Svijetla visina: 280 cm
- [12] WC M.; P= 8,20 m<sup>2</sup>; O= 11,80 m; Pod: Keramičke pločice; Svijetla visina: 340 cm
- [13] WC Ž.; P= 7,98 m<sup>2</sup>; O= 11,44 m; Pod: Keramičke pločice; Svijetla visina: 340 cm
- [14] Komunikacije; P= 8,18 m<sup>2</sup>; O= 18,30 m; Pod: Keramičke pločice; Svijetla visina: 300 cm

Ukupna neto površina: 642,89 m<sup>2</sup>

<b>.a</b>	Lativa d.o.o. (Grup.a) Branilaca Sarajeva 20/II Sarajevo Tel/Fax: +387 33 264 156		<b>OSNOVA PRIZEMLJA</b>	
	Projektant	MA Amila Rujanac, MA Dina Bušatlić, MA Mersiha Čerim,	Objekat:	GZ 16 06 MA
<b>04</b>	Saradnik:	MA Sanja Bušatlić	Investitor:	Grad Zenica
			Predmet:	Idejni projekat
			Datum:	August, 2017.
			Mjerilo:	1:125



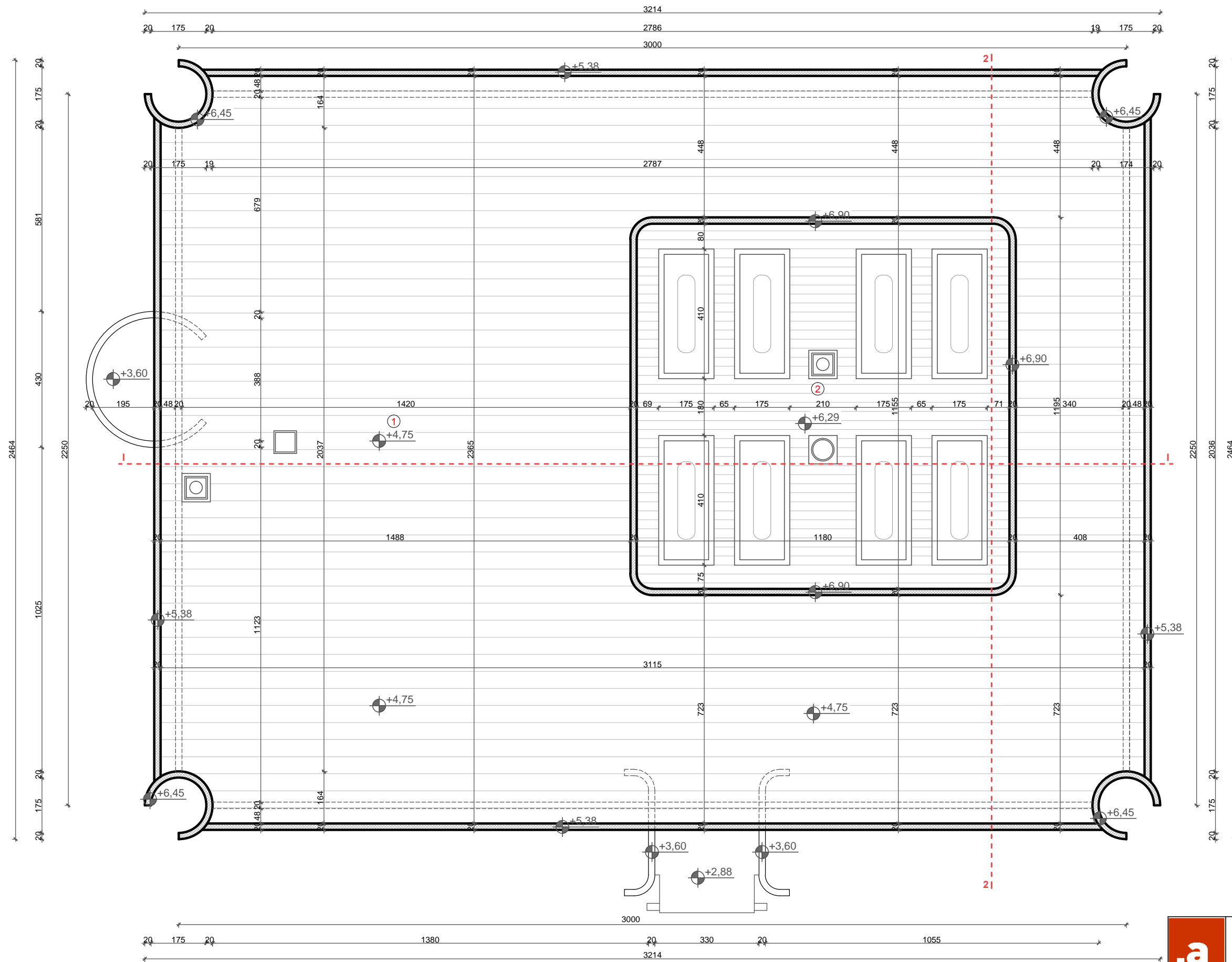
**OSNOVA PODRUMA 1**

- [1] Prostor 1; P= 7,80 m<sup>2</sup>; O= 11,40 m; Pod: Beton; Svijetla visina: 365 cm
  - [2] Hodnik; P= 12,30 m<sup>2</sup>; O= 20,90 m; Pod: Keramičke pločice; Svijetla visina: 385 cm
  - [3] Ostava; P= 6,60 m<sup>2</sup>; O= 14,50 m; Pod: Beton
  - [4] Prostor 2; P= 20,30 m<sup>2</sup>; O= 24,30 m; Pod: Keramičke pločice; Svijetla visina: 280 cm
  - [5] M. garderoba; P= 12,20 m<sup>2</sup>; O= 14,80 m; Pod: Keramičke pločice; Svijetla visina: 280 cm
  - [6] WC ; P= 1,70 m<sup>2</sup>; O= 5,40 m
  - [7] WC ; P= 0,90 m<sup>2</sup>; O= 3,80 m
  - [8] Predprostor 1; P= 2,30 m<sup>2</sup>; O= 6,40 m; Pod: Keramičke pločice; Svijetla visina: 280 cm
  - [9] WC ; P= 0,95 m<sup>2</sup>; O= 4,10 m
  - [10] WC ; P= 0,95 m<sup>2</sup>; O= 4,10 m
  - [11] Predprostor 2; P= 3,70 m<sup>2</sup>; O= 8,10 m; Pod: Keramičke pločice; Svijetla visina: 280 cm
  - [12] WC ; P= 1,55 m<sup>2</sup>; O= 5,30 m; Pod: Keramičke pločice; Svijetla visina: 280 cm
  - [13] Ž. garderoba; P= 13,30 m<sup>2</sup>; O= 16,10 m; Pod: Keramičke pločice; Svijetla visina: 280 cm
  - [14] Magacin 1; P= 21,20 m<sup>2</sup>; O= 18,80 m; Pod: Keramičke pločice; Svijetla visina: 280 cm
  - [15] Magacin 2; P= 29,42 m<sup>2</sup>; O= 21,70 m; Pod: Keramičke pločice; Svijetla visina: 280 cm
  - [16] Prostor 3; P= 6,60 m<sup>2</sup>; O= 10,40 m; Pod: Beton; Svijetla visina: 365 cm
- Ukupna neto površina: 105,75 m<sup>2</sup>

**OSNOVA PODRUMA 2**

- [1] Predprostor (ženski WC); P= 10,30 m<sup>2</sup>; O= 16,20 m; Pod: Keramičke pločice; Svijetla visina: 280 cm
  - [2] WC ; P= 1,05 m<sup>2</sup>; O= 4,20 m; Pod: Keramičke pločice; Svijetla visina: 280 cm
  - [3] WC ; P= 1,05 m<sup>2</sup>; O= 4,20 m
  - [4] WC ; P= 1,05 m<sup>2</sup>; O= 4,20 m
  - [5] WC ; P= 1,05 m<sup>2</sup>; O= 4,20 m
  - [6] WC ; P= 1,05 m<sup>2</sup>; O= 4,20 m
  - [7] WC ; P= 1,05 m<sup>2</sup>; O= 4,20 m
  - [8] WC ; P= 1,05 m<sup>2</sup>; O= 4,20 m
  - [9] WC ; P= 1,05 m<sup>2</sup>; O= 4,20 m
  - [10] Predprostor (muški WC); P= 11,60 m<sup>2</sup>; O= 17,40 m; Pod: Keramičke pločice; Svijetla visina: 280 cm
  - [11] WC ; P= 1,05 m<sup>2</sup>; O= 4,20 m
  - [12] WC ; P= 1,05 m<sup>2</sup>; O= 4,20 m
  - [13] WC ; P= 1,05 m<sup>2</sup>; O= 4,20 m
  - [14] WC ; P= 1,05 m<sup>2</sup>; O= 4,20 m
  - [15] WC ; P= 1,05 m<sup>2</sup>; O= 4,20 m
  - [16] WC ; P= 1,05 m<sup>2</sup>; O= 4,20 m
  - [17] Predprostor; P= 5,80 m<sup>2</sup>; O= 11,20 m; Pod: Keramičke pločice; Svijetla visina: 280 cm
  - [18] Stepenište; P= 8,20 m<sup>2</sup>; O= 14,70 m; Pod: Keramičke pločice; Svijetla visina: 280 cm
- Ukupna neto površina: 50,60 m<sup>2</sup>

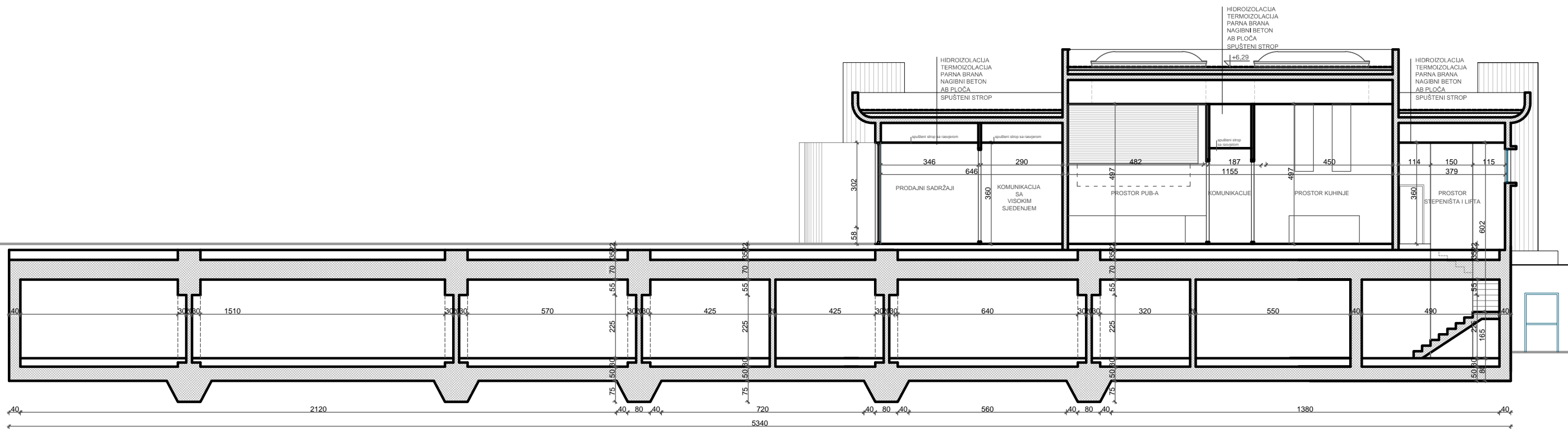
<b>.a</b>	Lativa d.o.o. (Grup.a) Branilaca Sarajeva 20/II Sarajevo Tel/Fax: +387 33 264 156		<b>OSNOVA PODRUMA</b>	
	Projektant	MA Amila Rujanac, MA Dina Bušatlić, MA Mersiha Čerim,	Objekat:	GZ 16 06 MA
<b>05</b>	Saradnik:	MA Sanja Bušatlić	Investitor:	Grad Zenica
	Datum:	August, 2017.	Predmet:	Idejni projekat
	Mjerilo:	1:125	Datum:	August, 2017.




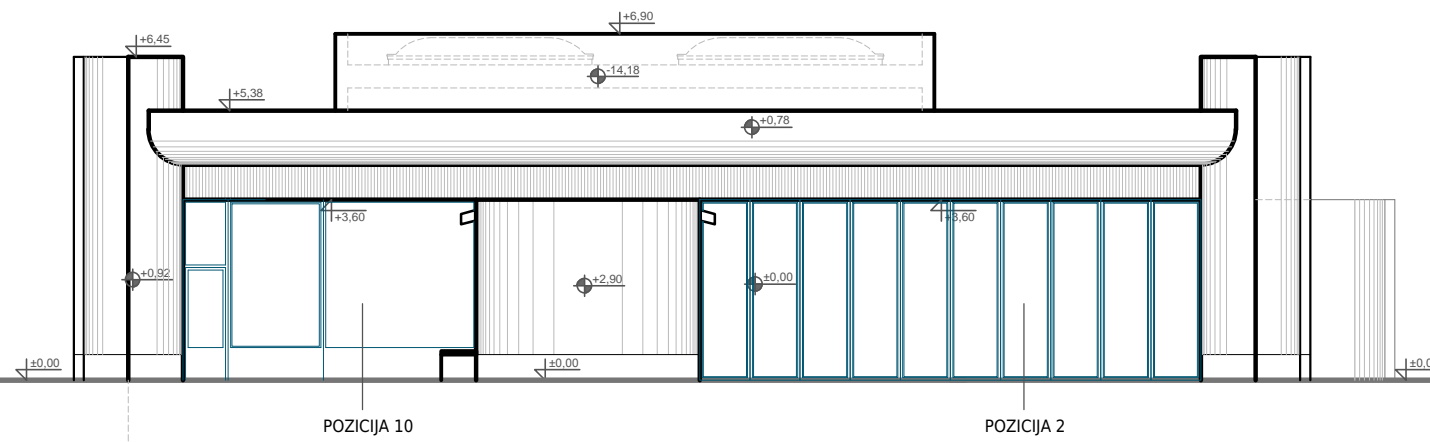
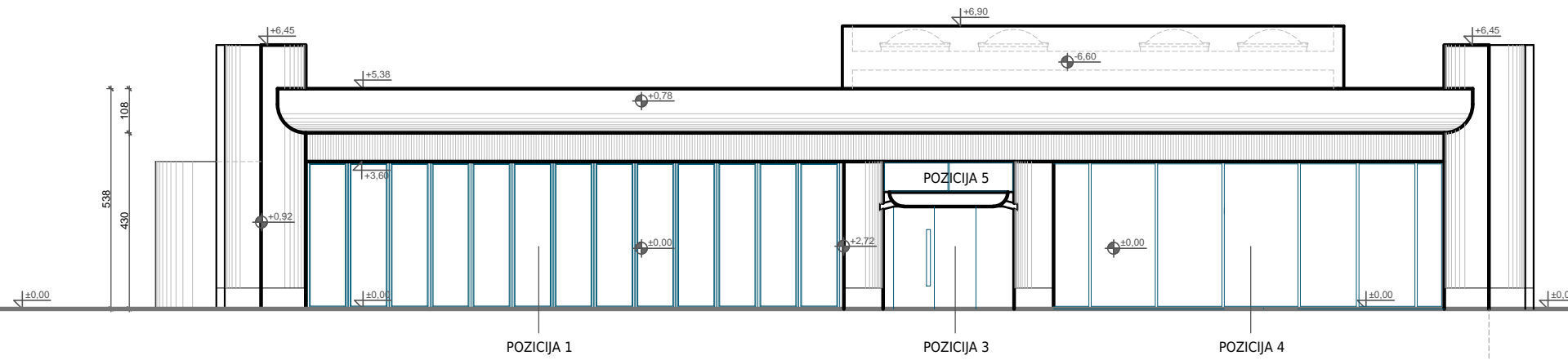
	<b>Lativa d.o.o. (Grup.a)</b> Branilaca Sarajeva 20/II Sarajevo Tel/Fax: +387 33 264 156	<b>OSNOVA KROVA</b>	
	Projektant MA Amila Rujanac, MA Dina Bušatlić, MA Mersiha Čerim,	Objekt: GZ 16 06 MA Investitor: Grad Zenica Predmet: Idejni projekat	Datum: August, 2017.
<b>06</b>	Saradnik: MA Sanja Bušatlić		




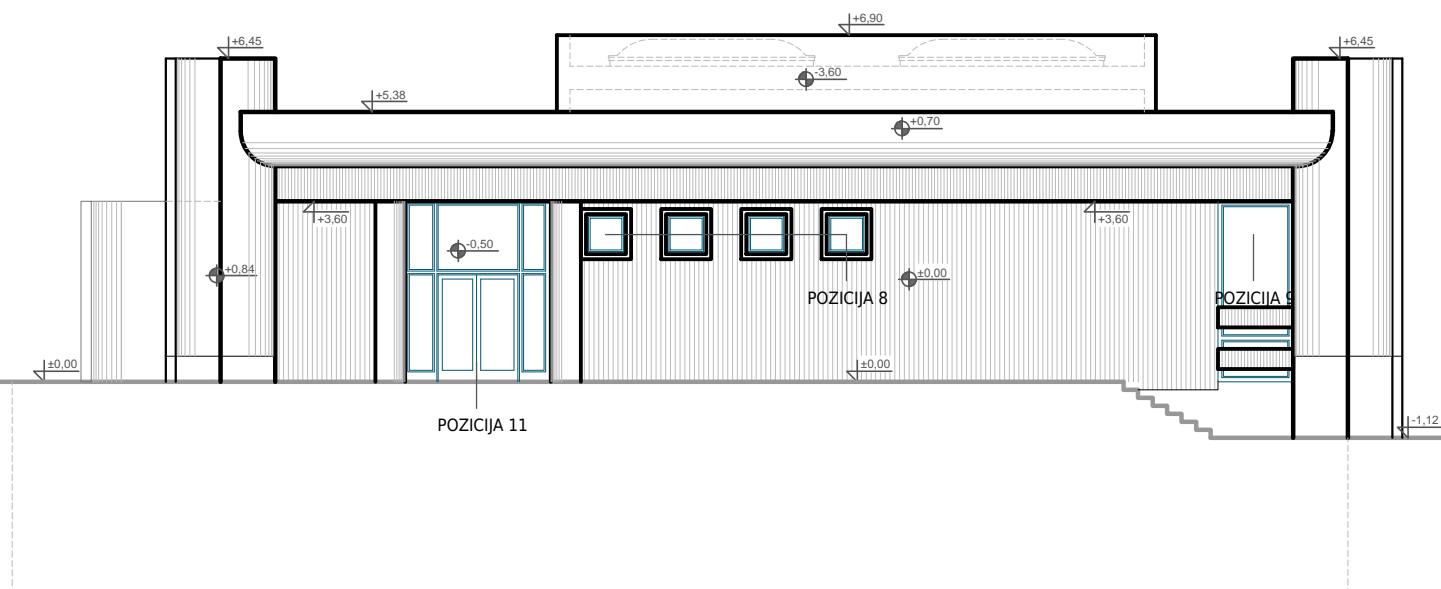
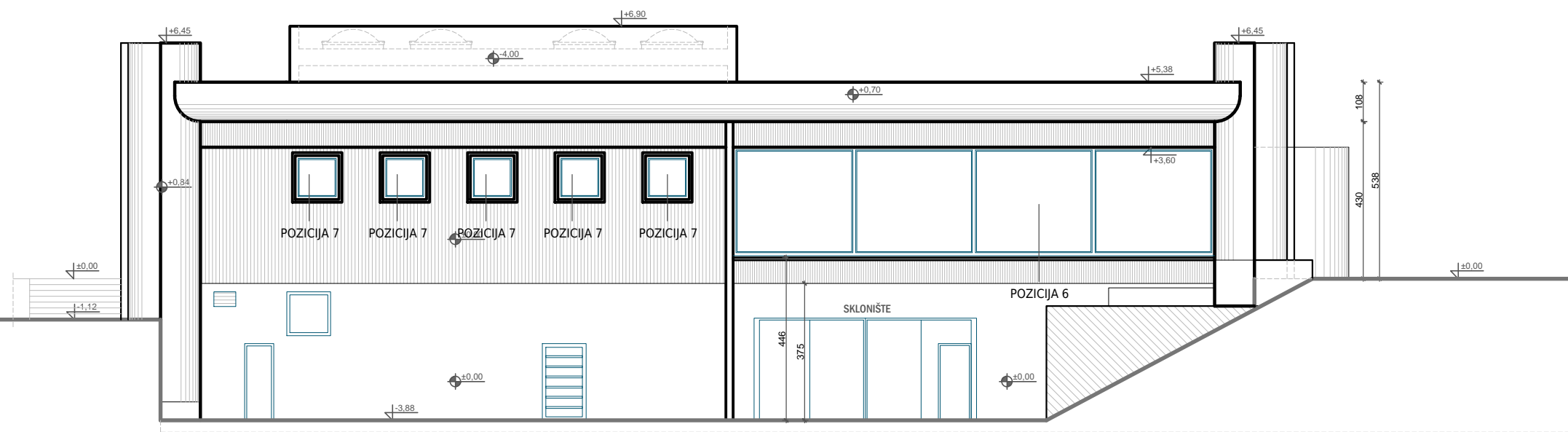





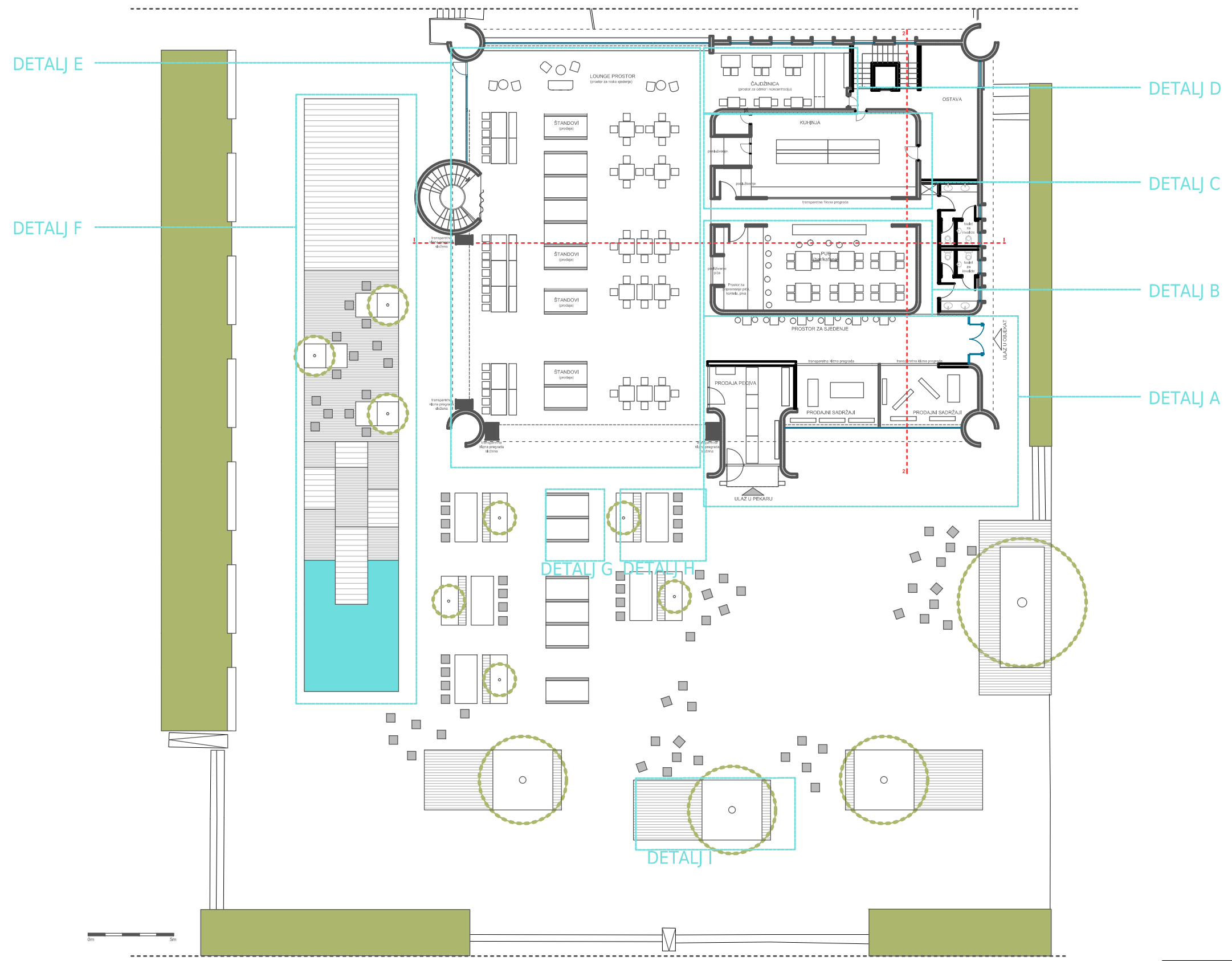
	<b>Lativa d.o.o. (Grup.a)</b> Branilaca Sarajeva 20/II Sarajevo Tel/Fax: +387 33 264 156	<b>PRESJEK 2-2</b>	
	<b>Projektant</b> MA Amila Rujanac, MA Dina Bušatlić, MA Mersiha Čerim,	<b>Objekat:</b> GZ 16 06 MA <b>Investitor:</b> Grad Zenica <b>Predmet:</b> Idejni projekat	
<b>08</b>	<b>Saradnik:</b> MA Sanja Bušatlić	<b>Datum:</b> August, 2017. <b>Mjerilo:</b> 1:150	



	<b>Lativa d.o.o. (Grup.a)</b> Branilaca Sarajeva 20/II Sarajevo Tel/Fax: +387 33 264 156	<b>FASADE</b>	
	Projektant MA Amila Rujanac, MA Dina Bušatlić, MA Mersiha Čerim,	Objekt: GZ 16 06 MA Investitor: Grad Zenica Predmet: Idejni projekat	Datum: August, 2017.
<b>09</b>	Saradnik: MA Sanja Bušatlić		



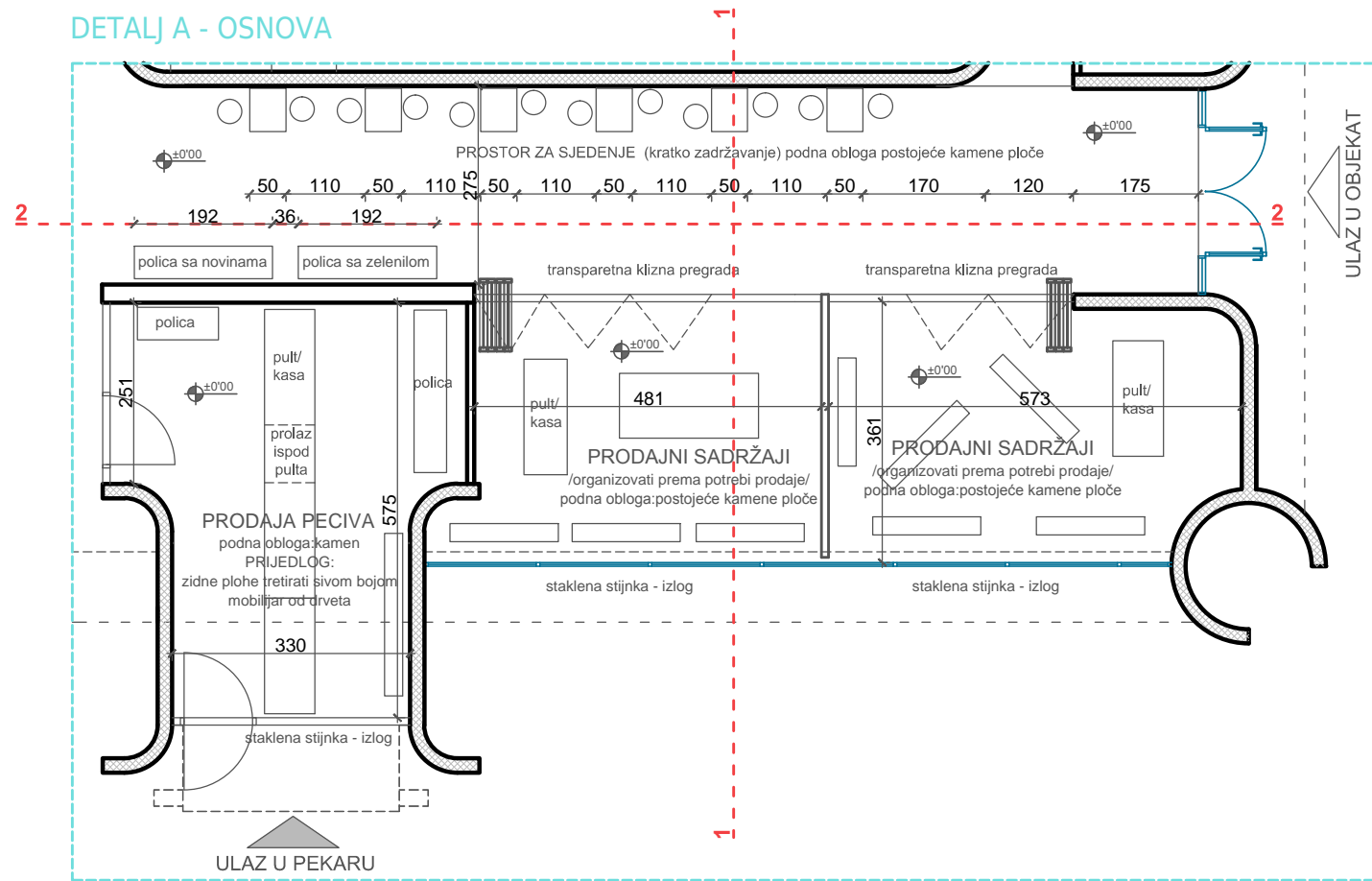
	<b>Lativa d.o.o. (Grup.a)</b> Branilaca Sarajeva 20/II Sarajevo Tel/Fax: +387 33 264 156	<b>FASADE</b>	
	Projektant MA Amila Rujanac, MA Dina Bušatlić, MA Mersiha Čerim,	Objekt: GZ 16 06 MA	Investitor: Grad Zenica
<b>10</b>	Saradnik: MA Sanja Bušatlić	Datum: August, 2017.	Mjerilo: 1:150



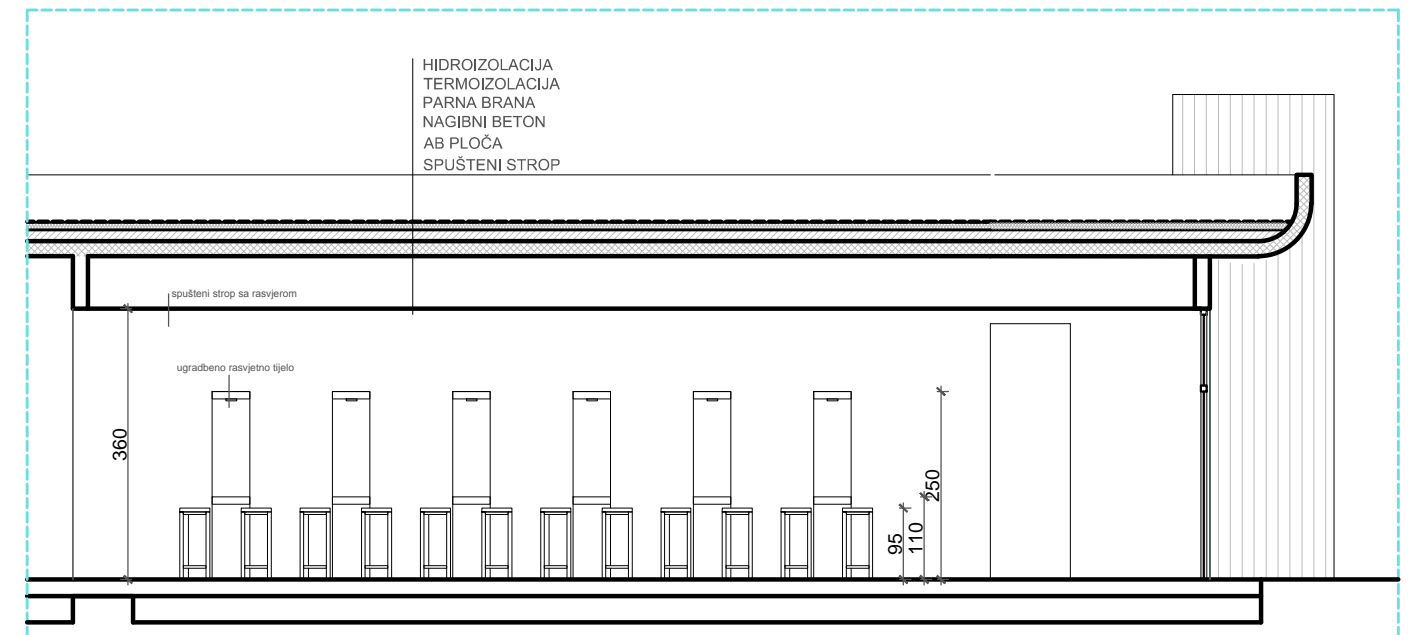
SVAKA NAZNAČENA ZONA JE DETALJNI  
OBJAŠNJENA KROZ CRTEŽE KOJI SLIJEDE

	<b>Lativa d.o.o. (Grup.a)</b> Branilaca Sarajeva 20/II Sarajevo Tel/Fax: +387 33 264 156	<b>DETALJI</b>	
	Projektant MA Amila Rujanac, MA Dina Bušatlić, MA Mersiha Čerim,	Objeat: GZ 16 06 MA	Investitor: Grad Zenica
<b>11</b>	Saradnik: MA Sanja Bušatlić	Datum: August, 2017.	Mjerilo: 1:200

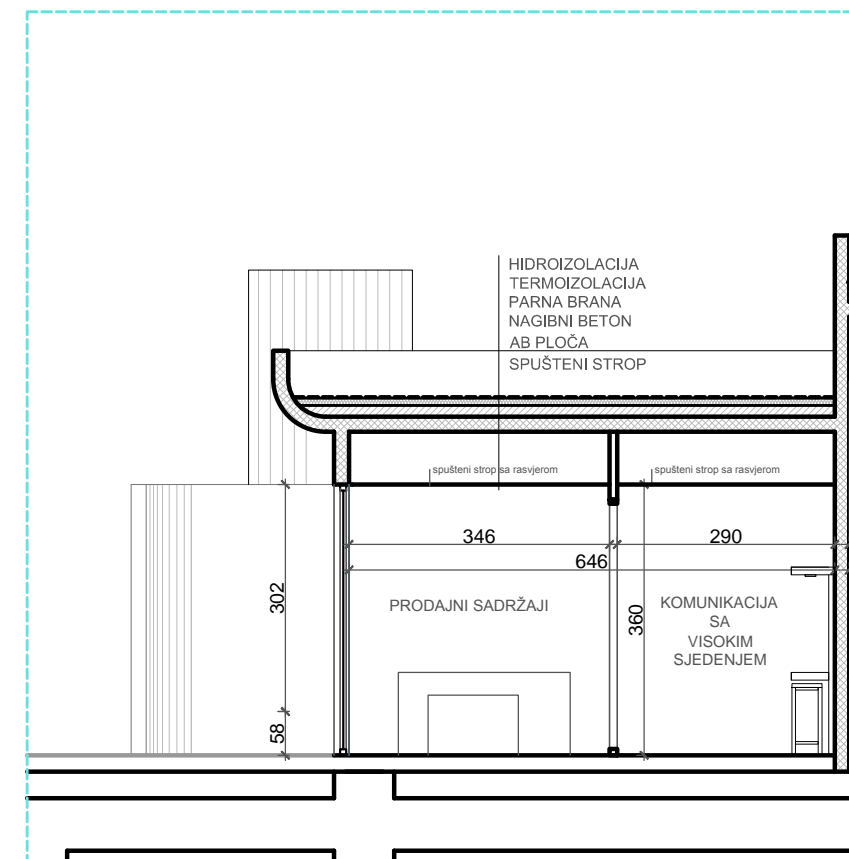
### DETALJ A - OSNOVA



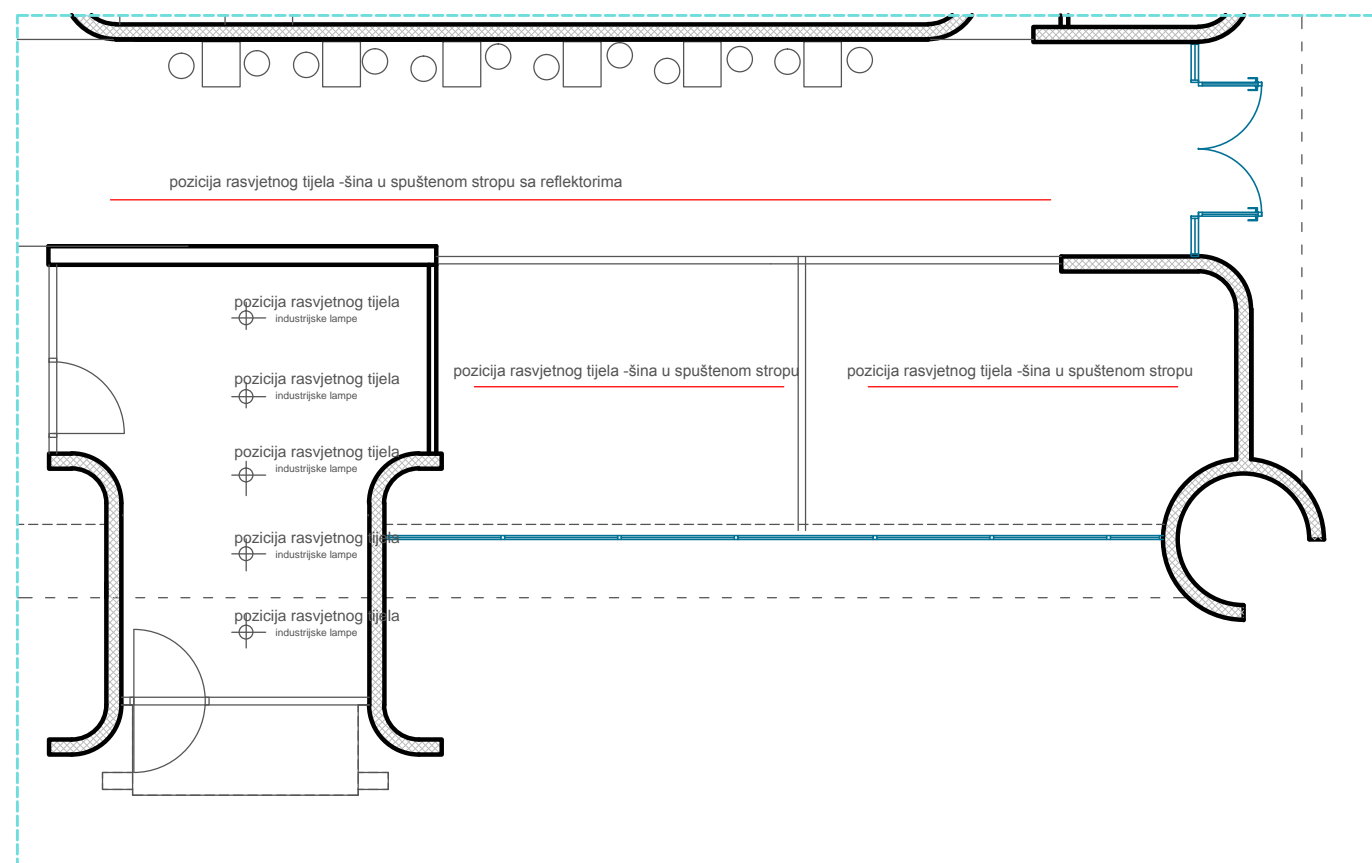
### DETALJ B - PRESJEK 2-2



### DETALJ B - PRESJEK 1-1



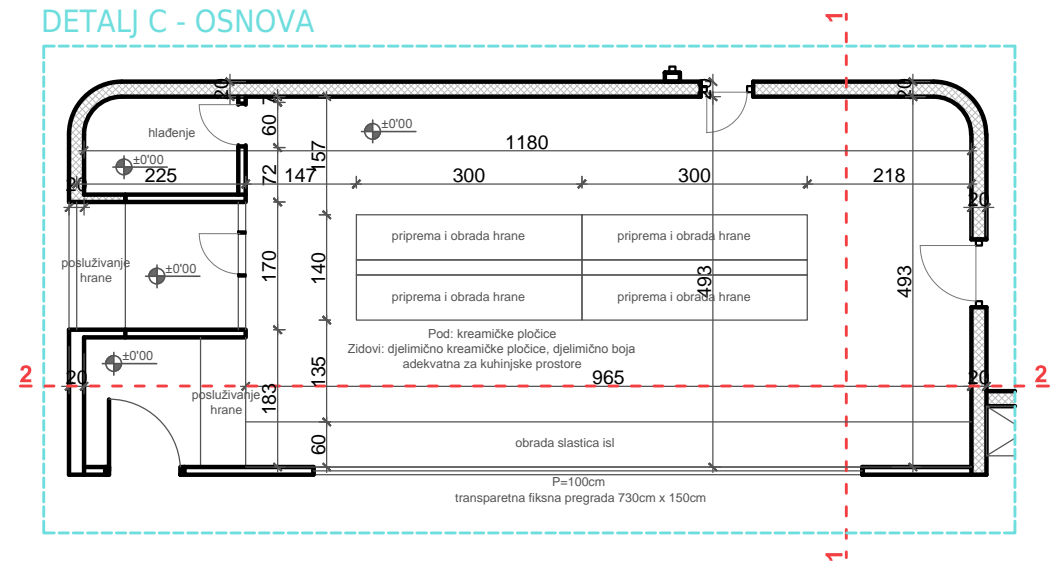
### DETALJ A - POGLED STROPA



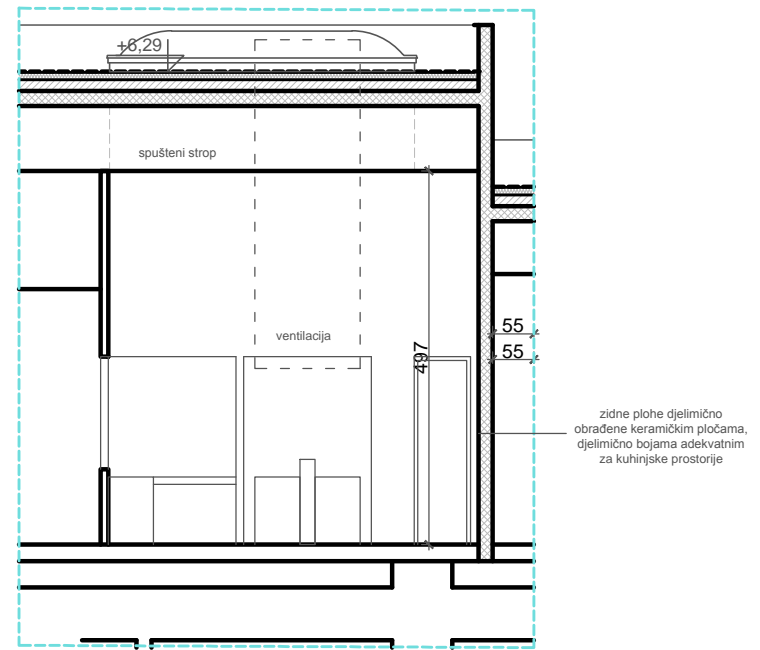
	<b>Lativa d.o.o. (Grup.a)</b> Branilaca Sarajeva 20/II Sarajevo Tel/Fax: +387 33 264 156	<b>DETALJ A</b>	
	Projektant: MA Amila Rujanac, MA Dina Bušatlić, MA Mersiha Čerim,	Objekt: GZ 16 06 MA Investitor: Grad Zenica Predmet: Idejni projekat	Datum: August, 2017. Mjerilo: 1:100
<b>12</b>	Saradnik: MA Sanja Bušatlić		



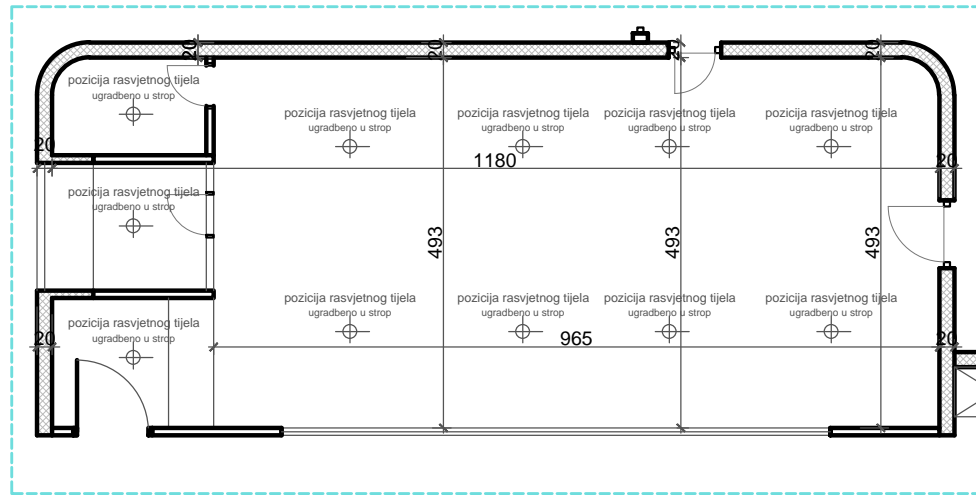
### DETALJ C - OSNOVA



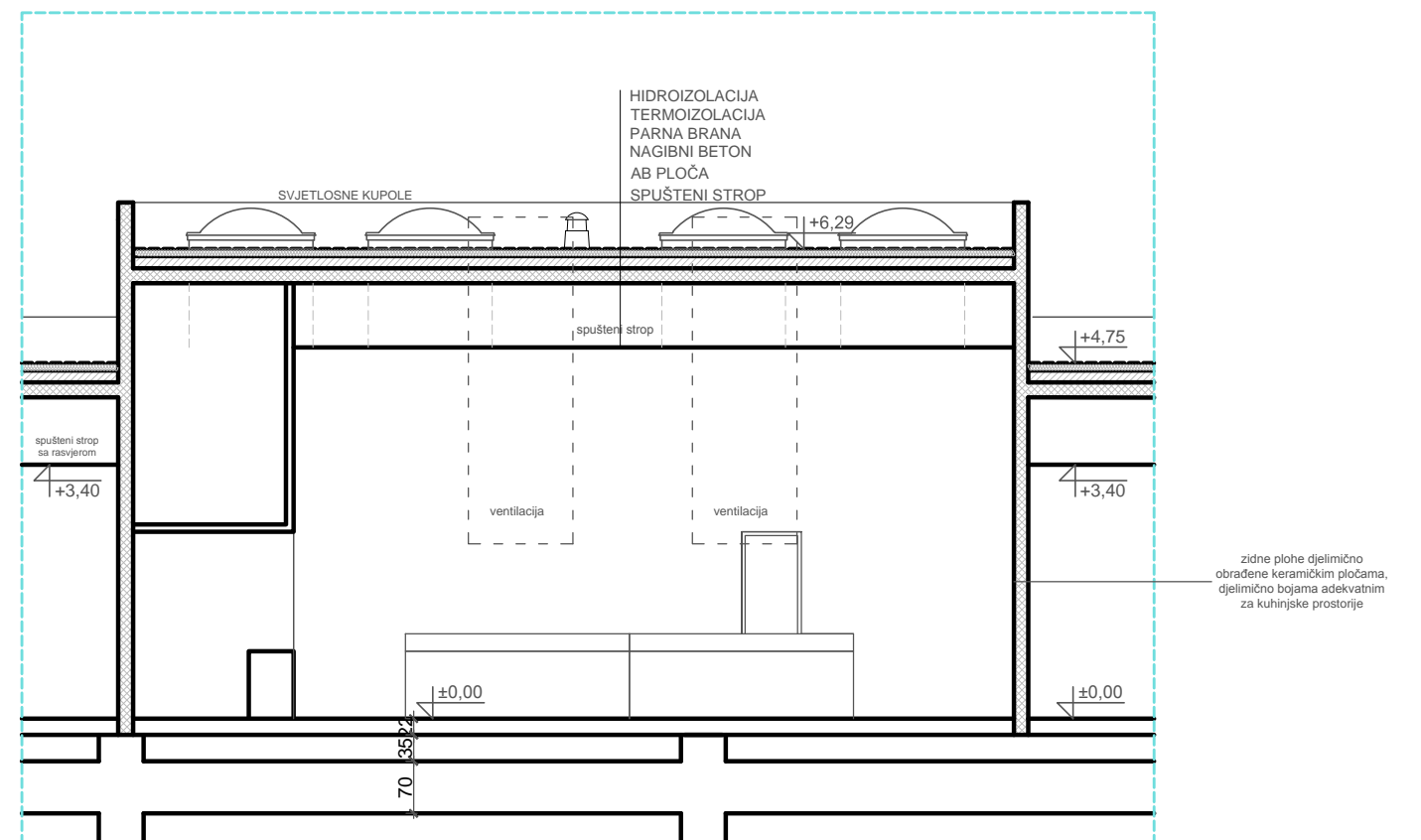
### DETALJ C - PRESJEK 1-1



### DETALJ C - POGLED STROPA

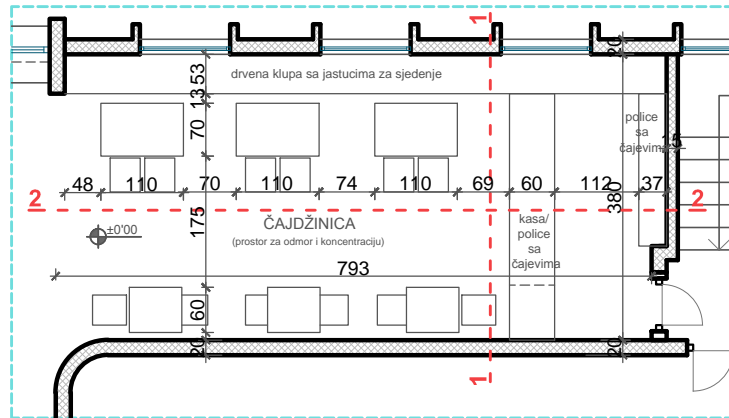


### DETALJ C - PRESJEK 2-2

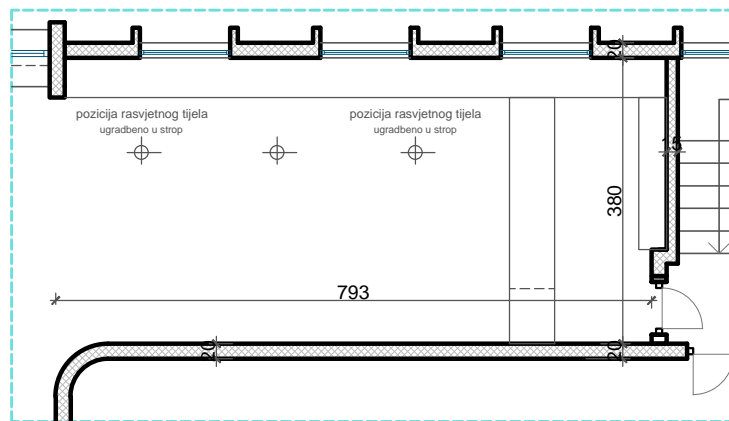


	<b>Lativa d.o.o. (Grup.a)</b> Branilaca Sarajeva 20/II Sarajevo Tel/Fax: +387 33 264 156	<b>DETALJ C</b>	
	Projektant: MA Amila Rujanac, MA Dina Bušatlić, MA Mersiha Čerim,	Objekat: GZ 16 06 MA Investitor: Grad Zenica Predmet: Idejni projekat	
<b>14</b>	Saradnik: MA Sanja Bušatlić	Datum: August, 2017. Mjerilo: 1:100	

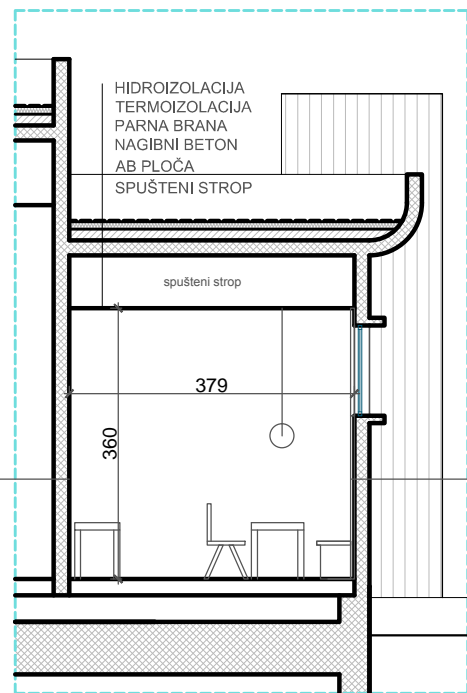
DETALJ D - PRESJEK 1-1



DETALJ D - POGLED STROPA



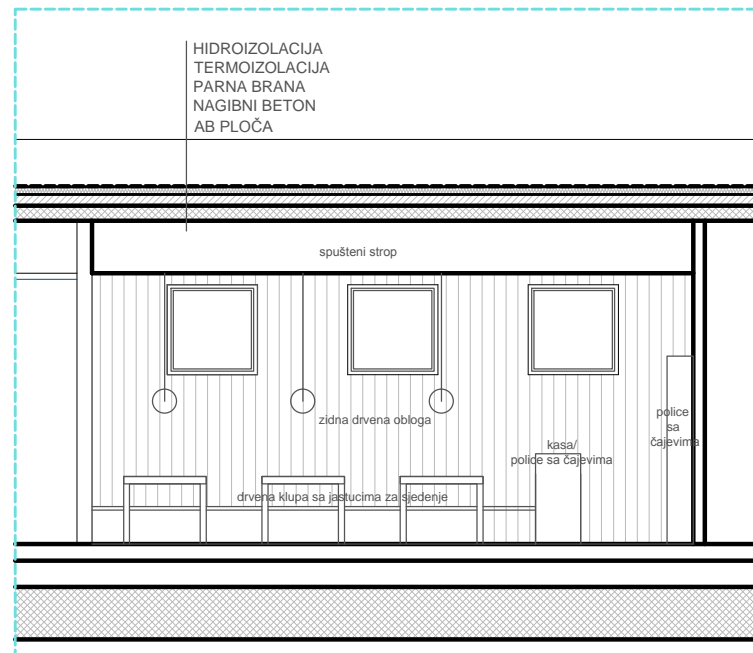
DETALJ D - PRESJEK 1-1



zidne plohe djelimično obrađene keramičkim pločama, djelimično bojama adekvatnim za kuhinjske prostorije

zidne plohe djelimično obrađene keramičkim pločama, djelimično bojama adekvatnim za kuhinjske prostorije

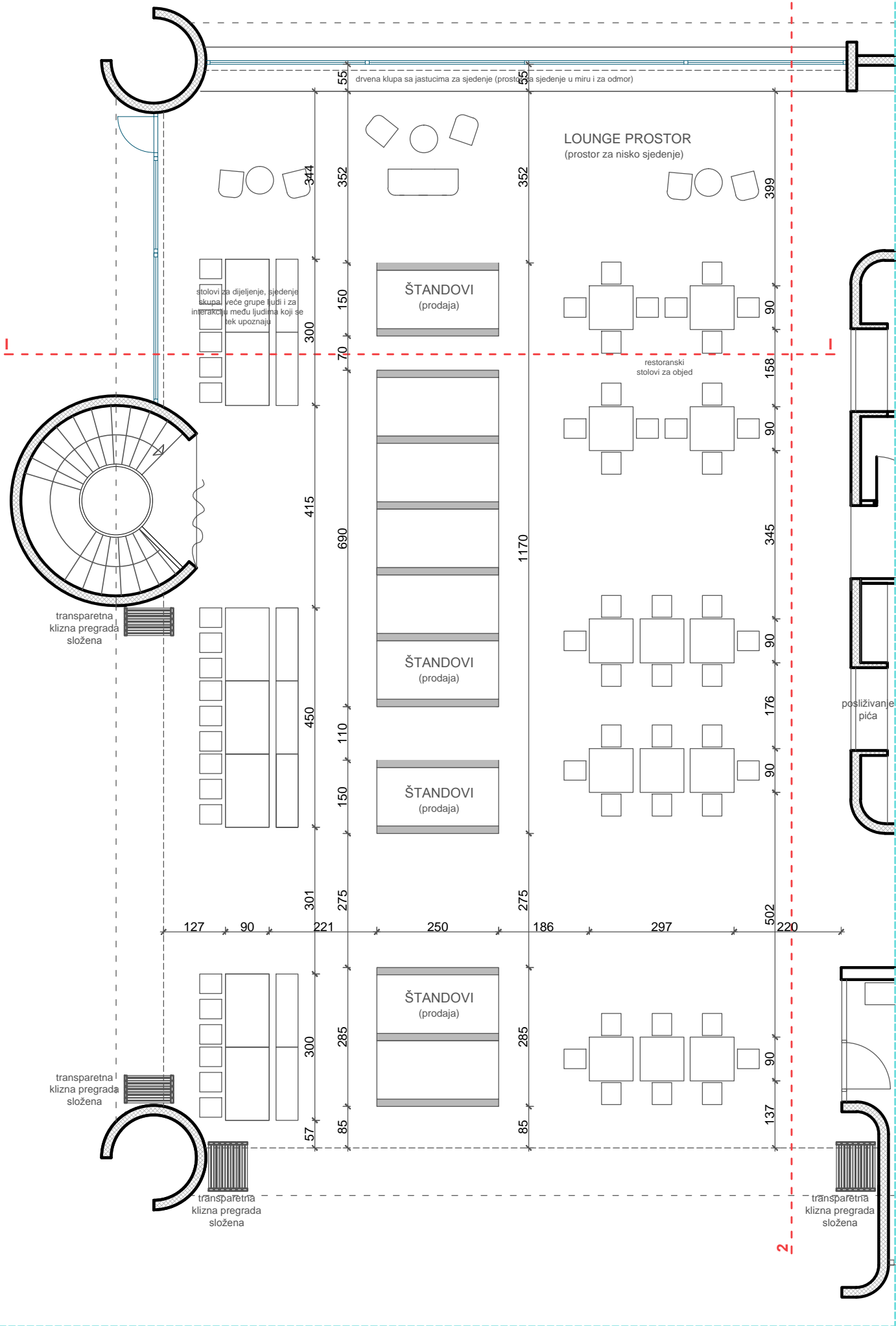
DETALJ D - PRESJEK 2-2



	Lativa d.o.o. (Grup.a) Branilaca Sarajeva 20/II Sarajevo Tel/Fax: +387 33 264 156	<b>DETALJ D</b>	
	Projektant MA Amila Rujanac, MA Dina Bušatlić, MA Mersiha Čerim,	Objekat: GZ 16 06 MA Investitor: Grad Zenica Predmet: Idejni projekat	
<b>15</b>	Saradnik: MA Sanja Bušatlić	Datum: August, 2017. Mjerilo: 1:100	

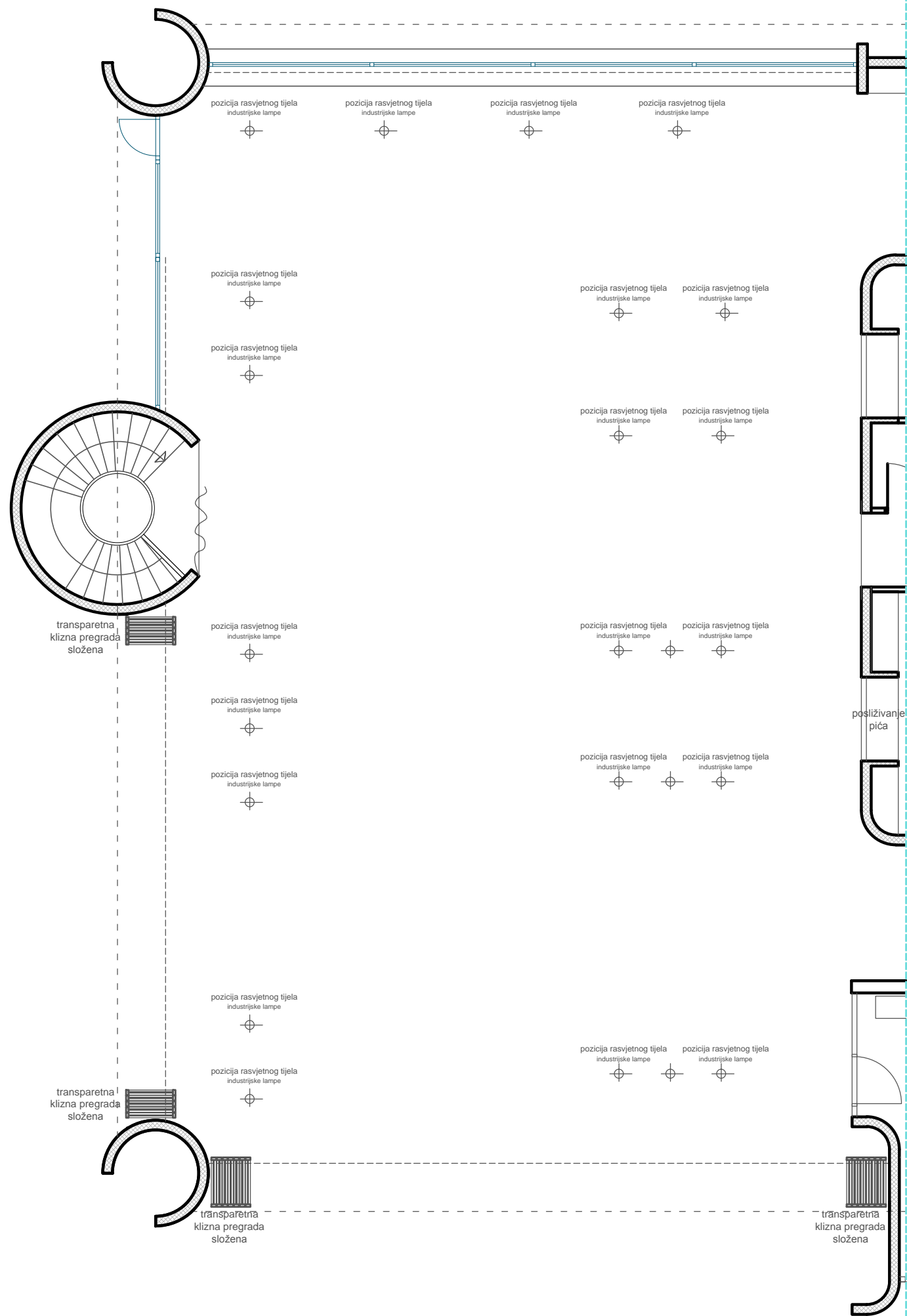


DETALJ E - OSNOVA



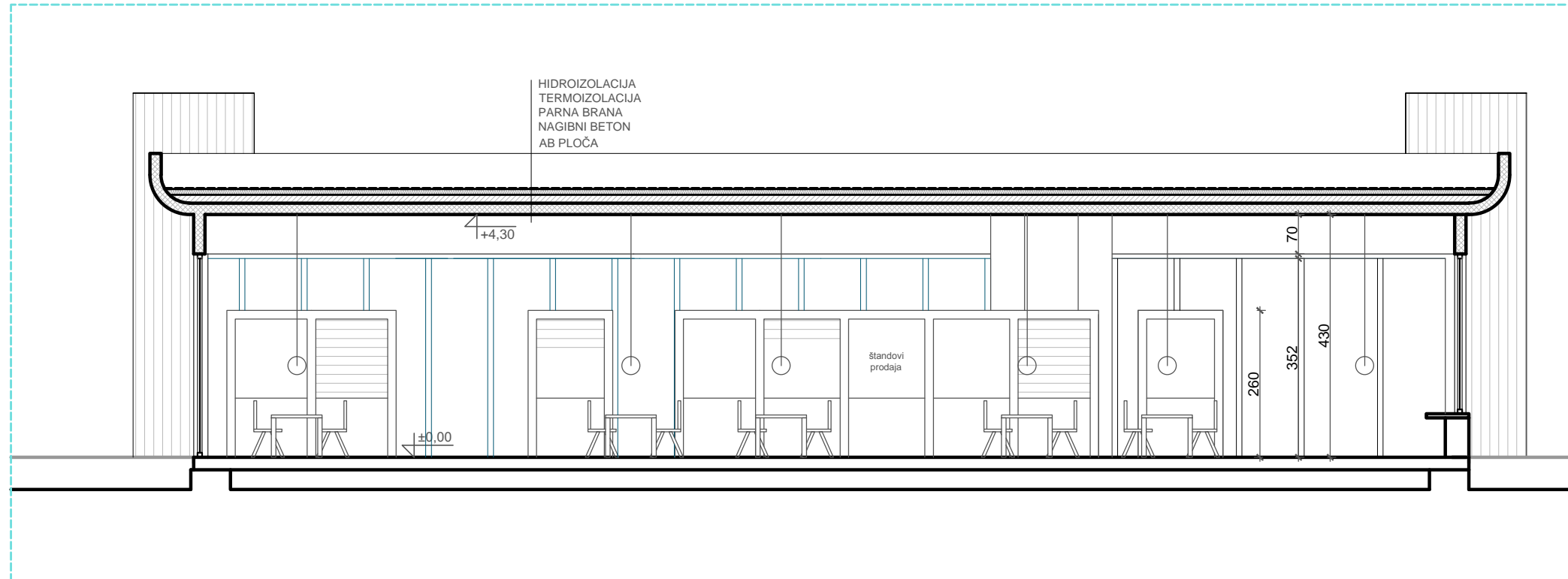
	Lativa d.o.o. (Grup.a) Branilaca Sarajeva 20/II Sarajevo Tel/Fax: +387 33 264 156	<b>DETALJ E</b>	
	Projektant MA Amila Rujanac, MA Dina Bušatlić, MA Mersiha Čerim,	Objekat: GZ 16 06 MA Investitor: Grad Zenica Predmet: Idejni projekat	Datum: August, 2017. Mjerilo: 1:100
<b>16</b>	Saradnik: MA Sanja Bušatlić		

DETALJ E - POGLED STROPA

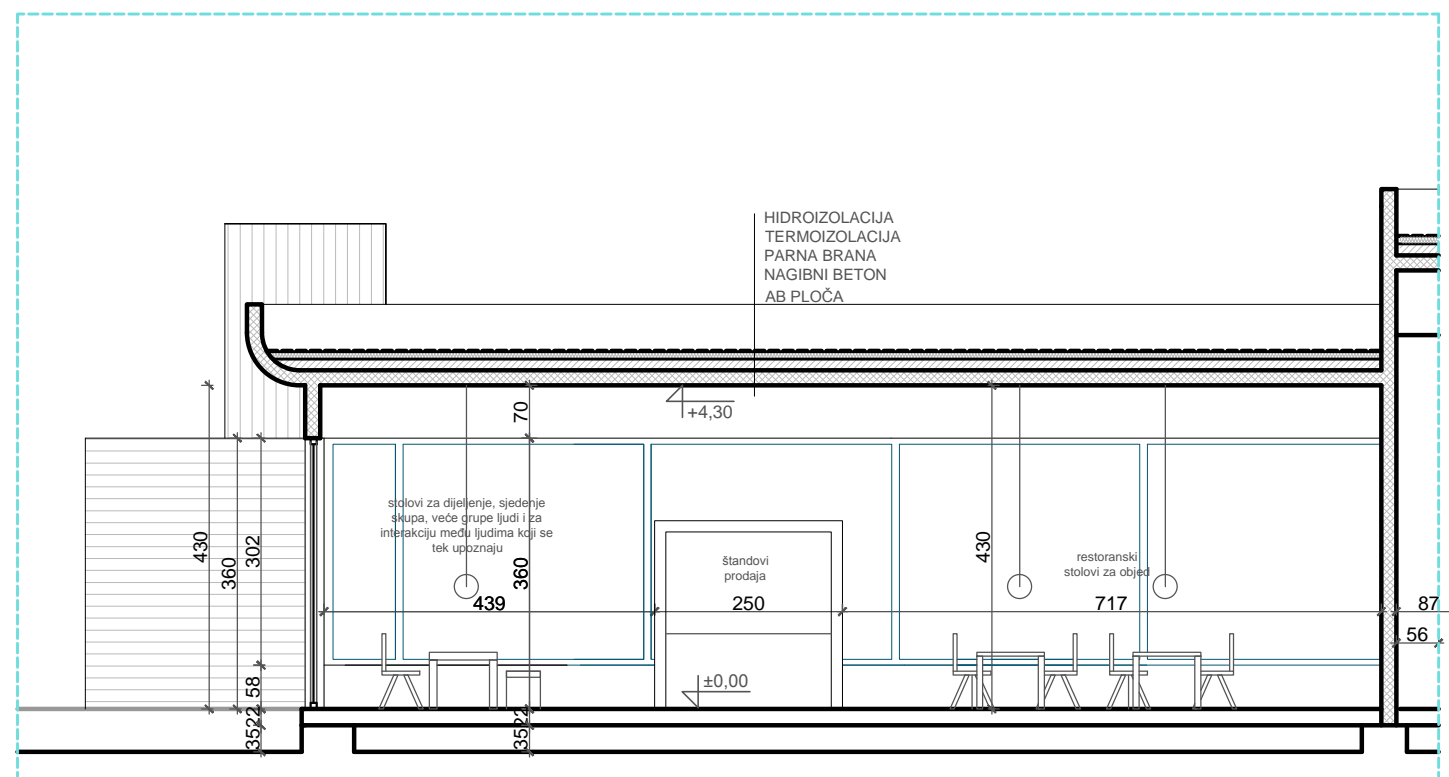



	Lativa d.o.o. (Grup.a) Branilaca Sarajeva 20/II Sarajevo Tel/Fax: +387 33 264 156	<b>DETALJ E</b>	
	Projektant MA Amila Rujanac, MA Dina Bušatlić, MA Mersiha Čerim,	Objeat: GZ 16 06 MA Investitor: Grad Zenica Predmet: Idejni projekat	Datum: August, 2017.
<b>17</b>	Saradnik: MA Sanja Bušatlić		

DETALJ E - PRESJEK 2-2

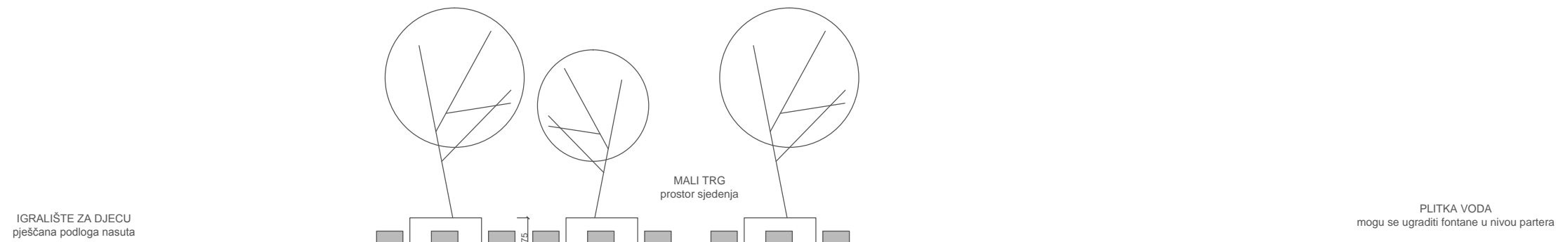


DETALJ E - PRESJEK 1-1

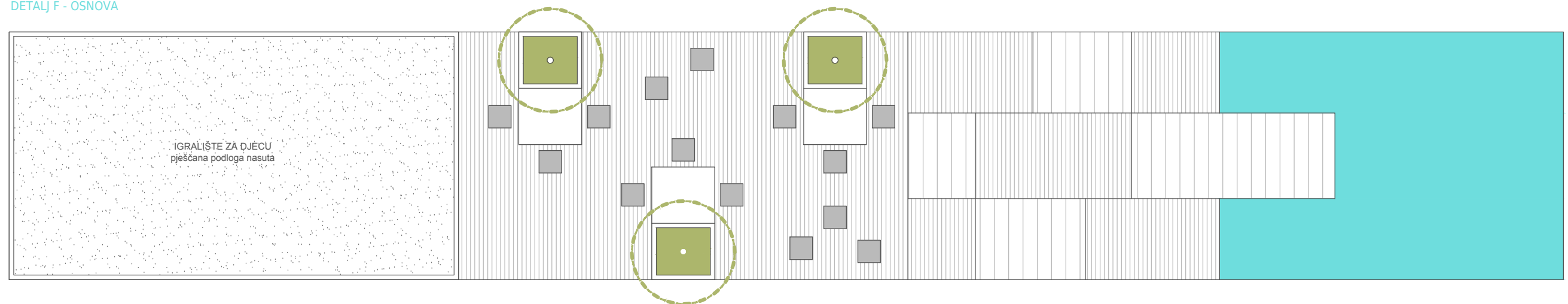


	<b>Lativa d.o.o. (Grup.a)</b> Branilaca Sarajeva 20/II Sarajevo Tel/Fax: +387 33 264 156	<b>DETALJ E</b>	
	Projektant MA Amila Rujanac, MA Dina Bušatlić, MA Mersiha Čerim,	Objekt: GZ 16 06 MA Investitor: Grad Zenica Predmet: Idejni projekat	
<b>18</b>	Saradnik: MA Sanja Bušatlić	Datum: August, 2017. Mjerilo: 1:100	

DETALJ F - POGLED



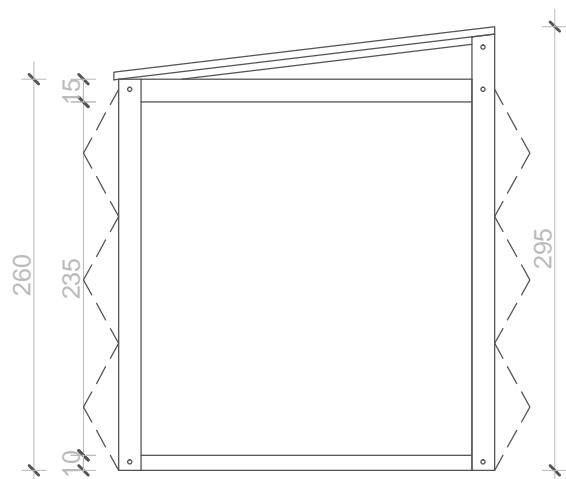
DETALJ F - OSNOVA



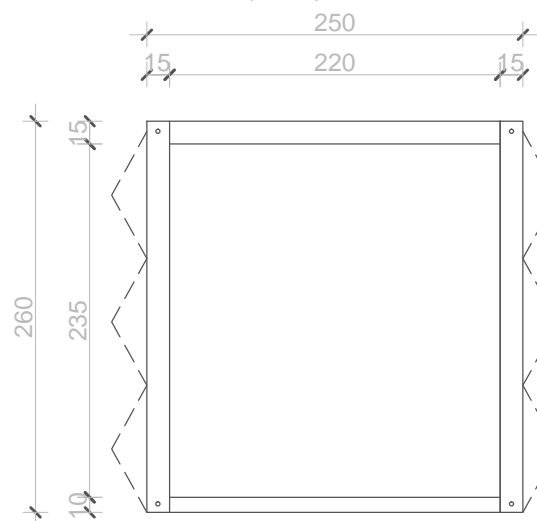
<b>.a</b>	Lativa d.o.o. (Grup.a) Branilaca Sarajeva 20/II Sarajevo Tel/Fax: +387 33 264 156		<b>DETALJ F</b>	
	Projektant	MA Amila Rujanac, MA Dina Bušatlić, MA Mersiha Čerim,	Objekat:	GZ 16 06 MA
<b>19</b>	Saradnik:	MA Sanja Bušatlić	Investitor:	Grad Zenica
			Predmet:	Idejni projekat
			Datum:	August, 2017.
			Mjerilo:	1:100

## DETALJ G - PRESJEK

PRESJEK KROZ JEDINICU  
drvena konstrukcija sa kosim krovom za jedinice koje će biti postavljene vani



PRESJEK KROZ JEDINICU  
drvena konstrukcija sa ravnim krovom za jedinice koje će biti postavljene unutra

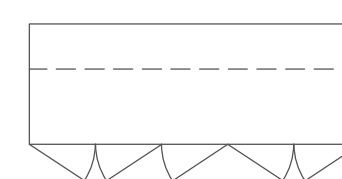
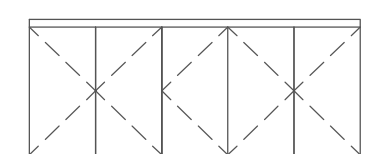
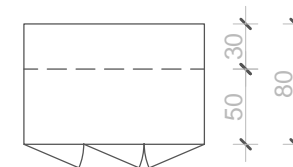
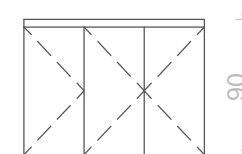


drveni kapci koji se klizno mogu rolati da se zatvore ili otvore po potrebi i veličini željenog otvora na jedinici

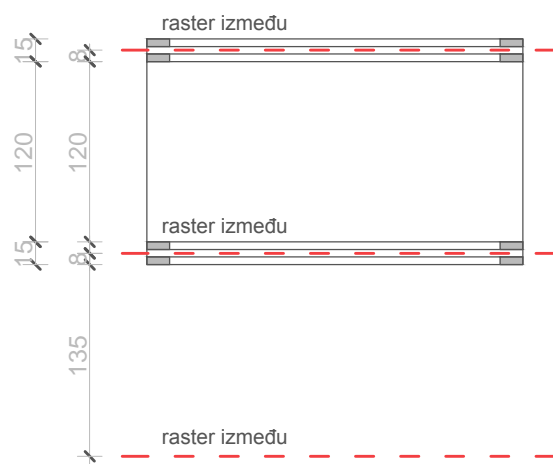
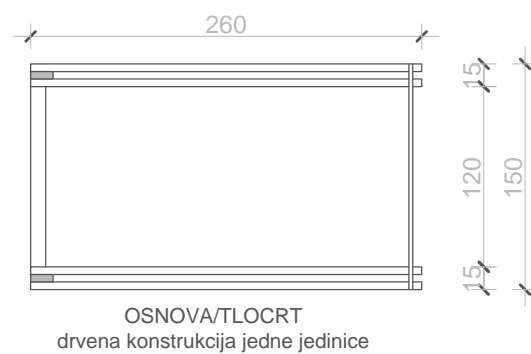
JEDINICA KOJA SE UBACUJE UNUTRA  
služi kao radna ploha i odlaganje,  
a ubacuje se prema potrebi



DETALJ G-JEDINICE KOJA SE UBACUJE UNUTRA  
služi kao radna ploha i odlaganje,  
a ubacuje se prema potrebi

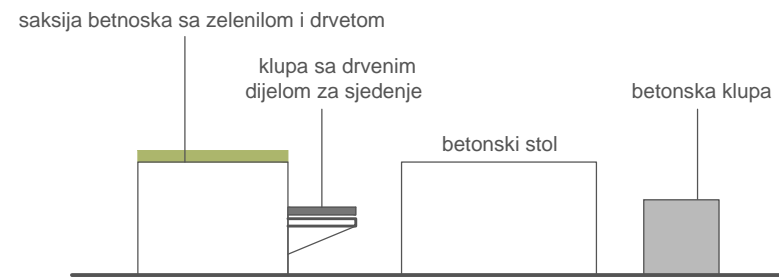


## DETALJ G - OSNOVA



	<b>Lativa d.o.o. (Grup.a)</b> Branilaca Sarajeva 20/II Sarajevo Tel/Fax: +387 33 264 156	<b>DETALJ G</b>	
	Projektant: MA Amila Rujanac, MA Dina Bušatlić, MA Mersiha Čerim,	Objekt: GZ 16 06 MA Investitor: Grad Zenica Predmet: Idejni projekat	
<b>20</b>	Saradnik: MA Sanja Bušatlić	Datum: August, 2017. Mjerilo: 1:50	

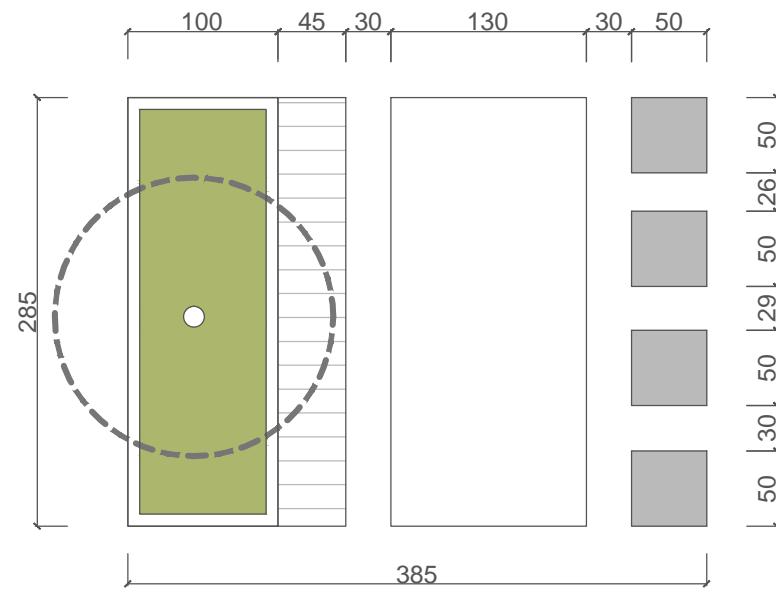
### DETALJ H - POGLED



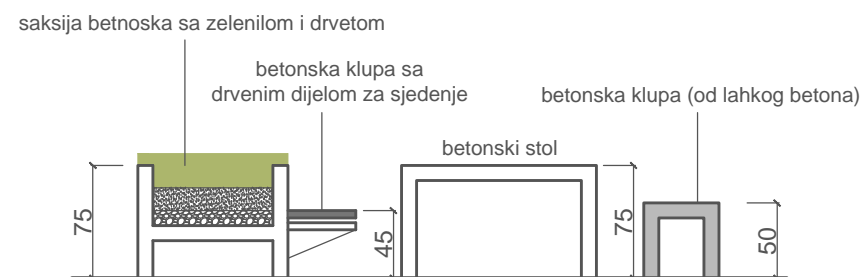
### DETALJ H - POGLED




### DETALJ H - OSNOVA

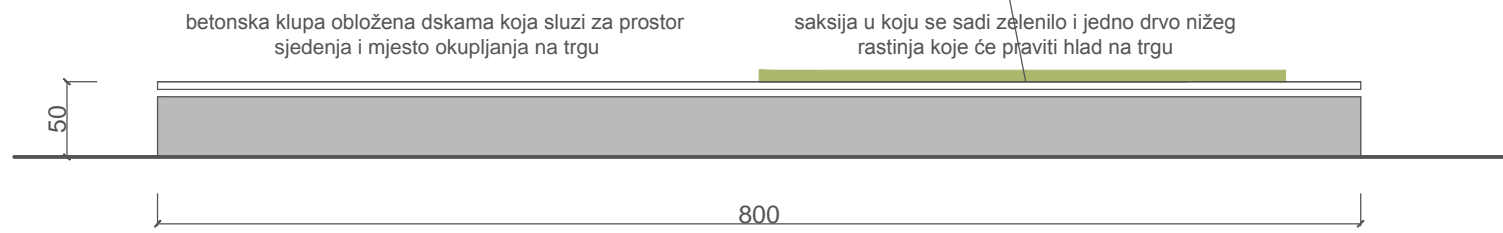


### DETALJ H - PRESJEK

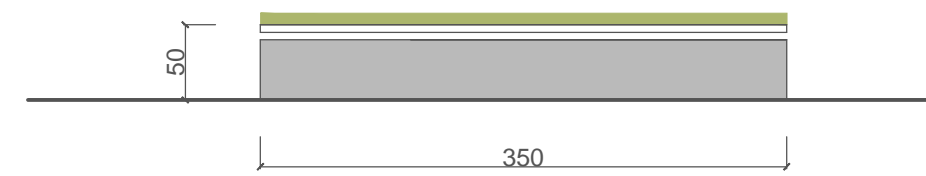


	<b>Lativa d.o.o. (Grup.a)</b> Branilaca Sarajeva 20/II Sarajevo Tel/Fax: +387 33 264 156	<b>DETALJ H</b>	
	Projektant: MA Amila Rujanac, MA Dina Bušatlić, MA Mersiha Čerim,	Objekat: GZ 16 06 MA Investitor: Grad Zenica Predmet: Idejni projekat	
<b>21</b>	Saradnik: MA Sanja Bušatlić	Datum: August, 2017. Mjerilo: 1:50	

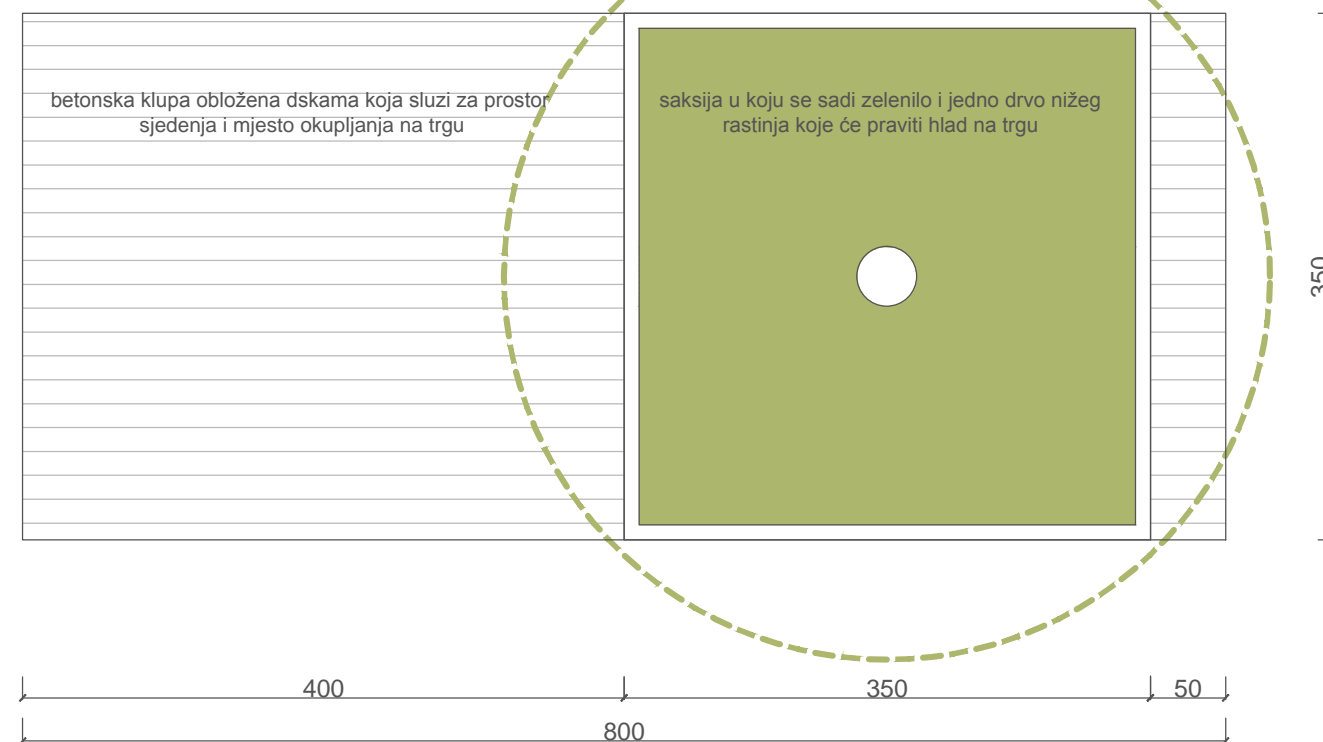
### DETALJ I - POGLED



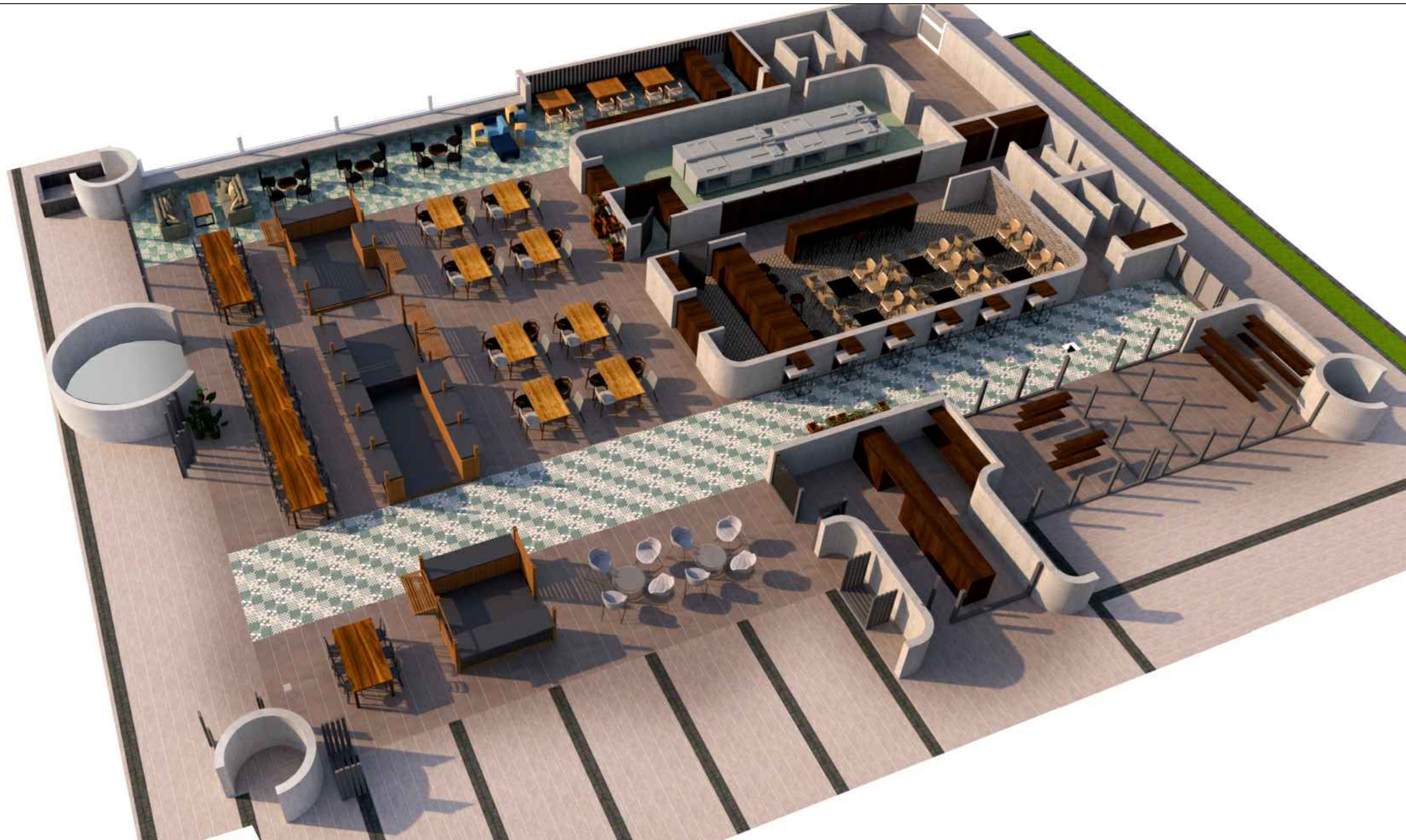
### DETALJ I - POGLED



### DETALJ I - OSNOVA




	<b>Lativa d.o.o. (Grup.a)</b> Branilaca Sarajeva 20/II Sarajevo Tel/Fax: +387 33 264 156	<b>DETALJ I</b>	
	Projektant: MA Amila Rujanac, MA Dina Bušatlić, MA Mersiha Čerim,	Objekat: GZ 16 06 MA Investitor: Grad Zenica Predmet: Idejni projekat	
<b>22</b>	Saradnik: MA Sanja Bušatlić	Datum: August, 2017. Mjerilo: 1:50	




	<b>Lativa d.o.o. (Grup.a)</b> Branilaca Sarajeva 20/II Sarajevo Tel/Fax: +387 33 264 156	<b>PROSTORNI PRIKAZ</b>	
	Projektant MA Amila Rujanac, MA Dina Bušatlić, MA Mersiha Čerim,	Objekat: GZ 16 06 MA Investitor: Grad Zenica Predmet: Idejni projekat	Datum: August, 2017.
<b>23</b>	Saradnik: MA Sanja Bušatlić		





	<b>Lativa d.o.o. (Grup.a)</b> Branilaca Sarajeva 20/II Sarajevo Tel/Fax: +387 33 264 156	<b>PROSTORNI PRIKAZ</b>	
	<b>Projektant</b> MA Amila Rujanac, MA Dina Bušatlić, MA Mersiha Čerim,	<b>Objekat:</b> GZ 16 06 MA <b>Investitor:</b> Grad Zenica <b>Predmet:</b> Idejni projekat	<b>Datum:</b> August, 2017. <b>Mjerilo:</b>
<b>24</b>	<b>Saradnik:</b> MA Sanja Bušatlić		




	<b>Lativa d.o.o. (Grup.a)</b> Branilaca Sarajeva 20/II Sarajevo Tel/Fax: +387 33 264 156	<b>PROSTORNI PRIKAZ</b>	
	Projektant MA Amila Rujanac, MA Dina Bušatlić, MA Mersiha Čerim,	Objekat: GZ 16 06 MA Investitor: Grad Zenica Predmet: Idejni projekat	Datum: August, 2017. Mjerilo:
<b>25</b>	Saradnik: MA Sanja Bušatlić		



	<b>Lativa d.o.o. (Grup.a)</b> Branilaca Sarajeva 20/II Sarajevo Tel/Fax: +387 33 264 156	<b>PROSTORNI PRIKAZ</b>	
	Projektant MA Amila Rujanac, MA Dina Bušatlić, MA Mersiha Čerim,	Objekat: GZ 16 06 MA Investitor: Grad Zenica Predmet: Idejni projekat	Datum: August, 2017. Mjerilo:
<b>26</b>	Saradnik: MA Sanja Bušatlić		



	<b>Lativa d.o.o. (Grup.a)</b> Branilaca Sarajeva 20/II Sarajevo Tel/Fax: +387 33 264 156		<b>PROSTORNI PRIKAZ</b>	
	Projektant MA Amila Rujanac, MA Dina Bušatlić, MA Mersiha Čerim,	Objekat: GZ 16 06 MA	Investitor: Grad Zenica	Predmet: Idejni projekat
<b>27</b>	Saradnik: MA Sanja Bušatlić	Datum: August, 2017.	Mjerilo:	



	<b>Lativa d.o.o. (Grup.a)</b> Branilaca Sarajeva 20/II Sarajevo Tel/Fax: +387 33 264 156	<b>PROSTORNI PRIKAZ</b>	
	Projektant MA Amila Rujanac, MA Dina Bušatlić, MA Mersiha Čerim,	Objekat: GZ 16 06 MA Investitor: Grad Zenica Predmet: Idejni projekat	Datum: August, 2017. Mjerilo:
<b>28</b>	Saradnik: MA Sanja Bušatlić		